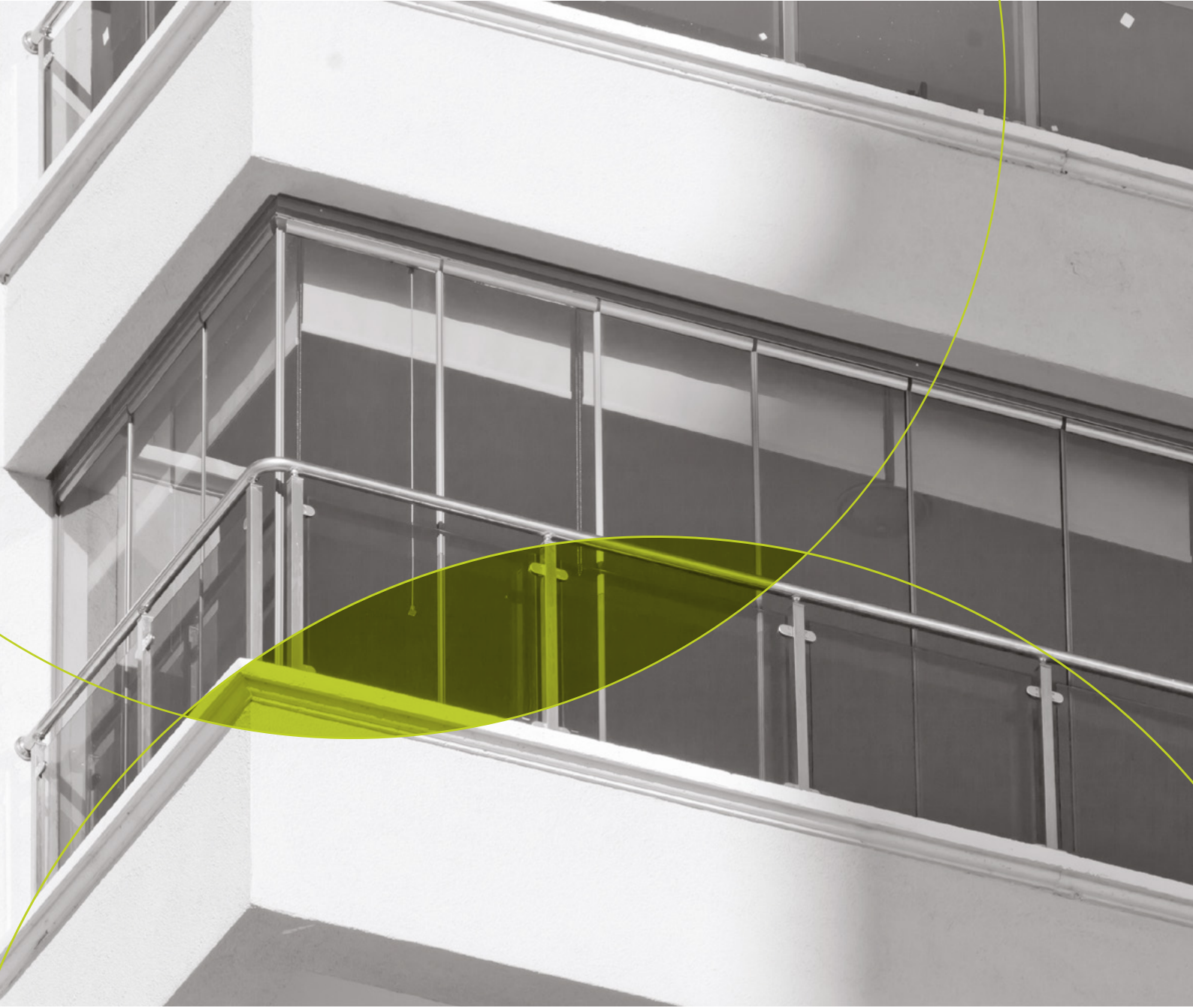
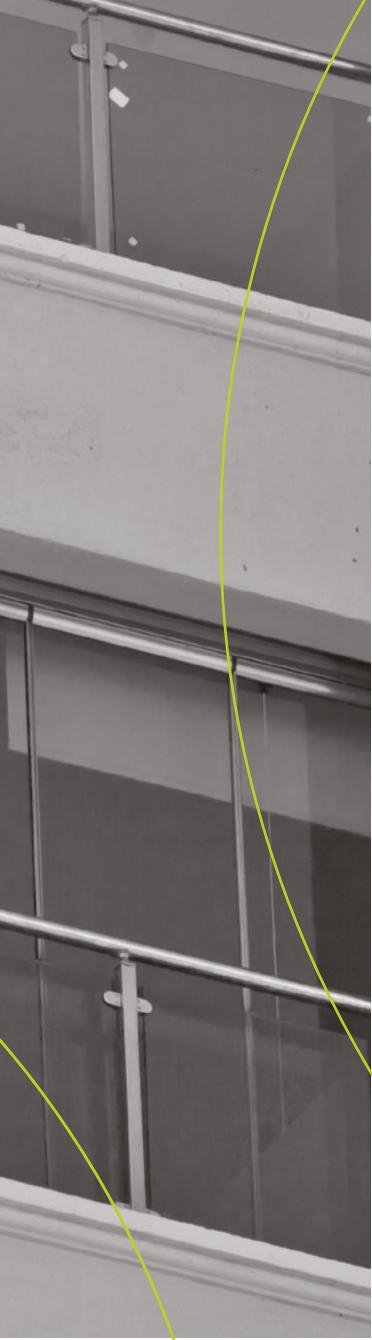


**FOLD** SERİSİ  
/ SERIES

KATLANIR CAM SİSTEMLERİ  
FOLDING GLASS SYSTEMS

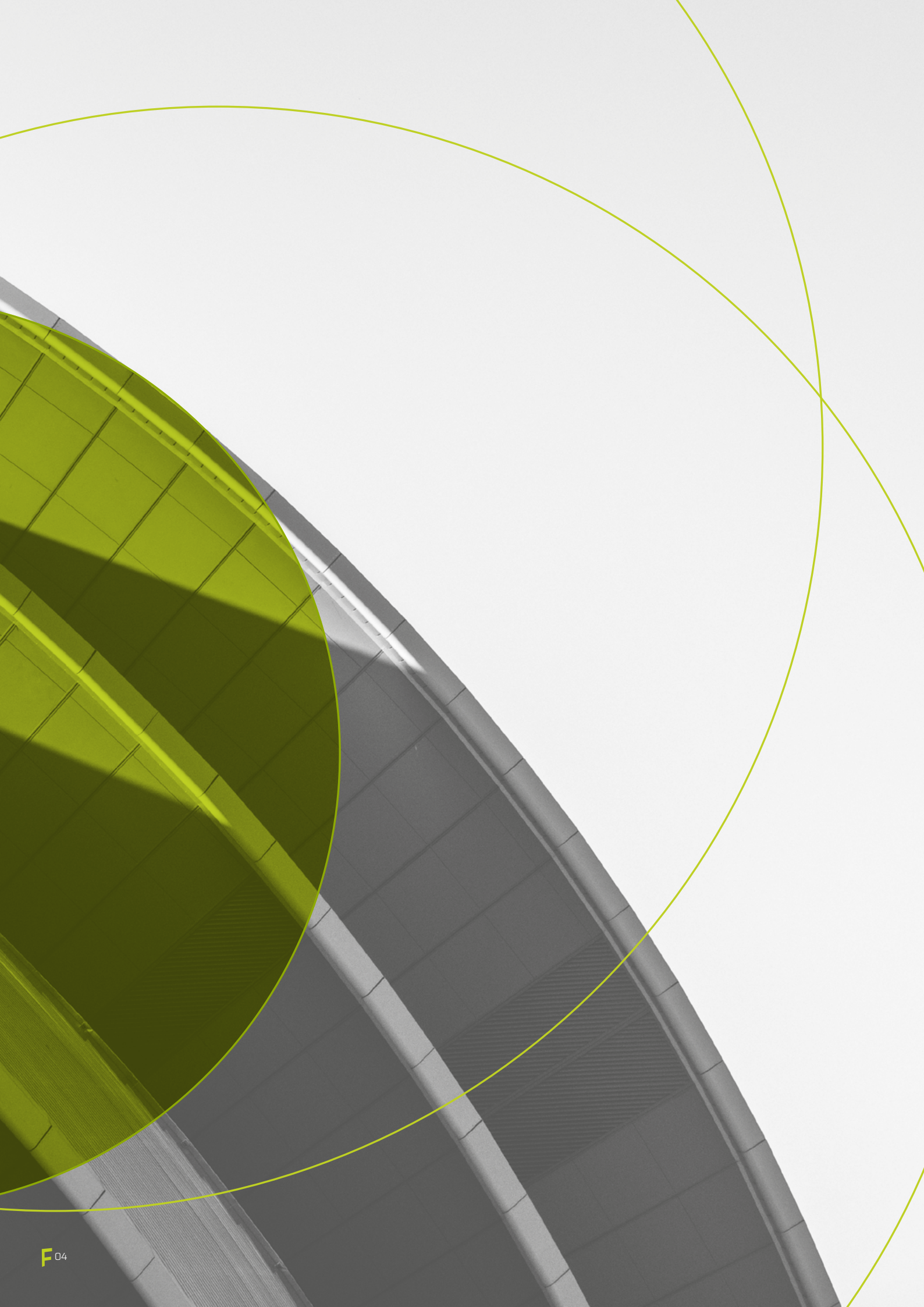


Hayata *mutlu* bir iz...  
Leave a *happier* mark on life...



# FOLD SERİSİ / SERIES

KATLANIR CAM SİSTEMLERİ  
FOLDING GLASS SYSTEMS



# F HAKKIMIZDA

İnsan hayatına konfor katacak, çevreye duyarlı, modern yaşam alanları oluşturmak için hayat bulan Eliz Cam Sistemleri başarılarla dolu yolculuğuna 2008 yılında başlamıştır. **Hayata kalıcı ve güvenli izler** bırakmayı kendine vizyon olarak belirleyen Eliz Cam Sistemleri; sektöre birçok yeniliği getiren ürünlerin de mimarı olmuştur.

Kuruluşundan bu yana artan ivmesi, insan odaklı kurum felsefesi ve geldiği noktadaki konumu itibarıyla yarınlara güçlü adımlarla yürüyen Eliz Cam Sistemleri, bu ülkenin gururla anılacak, küresel oyuncusu olma hedefine her geçen gün biraz daha yaklaşmaktadır.

# F ABOUT US

The successful journey of Eliz Glass Systems started in 2008 to create environmentally conscious, modern living spaces that will add comfort to human life. Eliz Glass Systems aims the vision to leave **permanent and reliable marks in life** has been the architect of the sector with different products introducing innovation.

Increasing acceleration of the firm, human-centric corporate philosophy and current position since the first day of the establishment have enabled Eliz Glass Systems to take strong steps forward to the future and gets the firm one step closer to the target to be the global player.

# FOLD SERİSİ / SERIES

KATLANIR CAM SİSTEMLERİ  
FOLDING GLASS SYSTEMS

# FOLD SERİSİ / SERIES

**FOLD**TECH  
Tek Camlı / Single Glass

Foldtech 101

Foldtech 301

Alttan Taşıyıcı  
Supported From  
Below

Üstten Taşıyıcı  
Supported From  
Above

**FOLD**TERM  
Isıcamlı / Double Glazed

Foldtech 111

Foldtech 311

Alttan Taşıyıcı  
Supported From  
Below

Üstten Taşıyıcı  
Supported From  
Above

# FOLDTECH

## FOLDTECH (Tek Camlı Katlanır Sistemler / Single Glazed Systems)

Sistem System	Cam Tipi (Temperli) Glass Type (Tempered)	Renkli Cam Opsiyonu* Timed Glass Option*	Dikey Baza Vertical Base	Ayar Kasa Adjustment Case	Alttan Taşıyıcı Supported From Below	Üstten Taşıyıcı Supported From Above	Maks. Kanat Geniřliđi (mm) Max Panel Width (mm)	Maks. Sistem Yüksekliđi Üstten Taşıyıcı (mm) Max System Height For Supported From Above (mm)
Foldtech 101	8mm 8mm	√	x	x	√	x	650	2630
Foldtech 301	8mm 8mm	√	√	√	√	√	850	2681

# FOLDTERM

## FOLDTERM (Isırcamlı Katlanır Sistemler / Double Glazed Systems)

Sistem System	Cam Tipi (Temperli) Glass Type (Tempered)	Jaluzi Opsiyonu** Venetian Blind Option**	Renkli Cam Opsiyonu* Timed Glass Option*	Low-E Isırcam Opsiyonu*** Low-E Coated Glass Option***	Dikey Baza Vertical Base	Ayar Kasa Adjustment Case	Alttan Taşıyıcı Supported From Below	Üstten Taşıyıcı Supported From Above	Maks. Kanat Geniřliđi (mm) Max Panel Width (mm)	Maks. Sistem Yüksekliđi Alttan Taşıyıcı (mm) Max System Height For Supported From Below (mm)	Maks. Sistem Yüksekliđi Üstten Taşıyıcı (mm) Max System Height For Supported From Above (mm)
Foldterm 111	4mm+12mm+4mm 4mm+12mm+4mm	√	√	√	√	x	√	√	650	2631	x
Foldterm 311	4mm+12mm+4mm 4mm+12mm+4mm	x	√	√	√	√	√	√	850	2681	2661

Not: Alttan taşıyıcı ve üstten taşıyıcı seçeneklerinin bulunduğu sistemlerde montaj yeri göz önünde bulundurularak bilirkışı taşıyıcı tipine karar verecektir.

\* Renkli cam müşterinin isteđine göre mevcut renklerden opsiyonel olarak sunulmaktadır.

\*\* Jaluzi modelleri ve renkleri sadece Foldterm 111 ürünü için opsiyonel olarak sunulmaktadır. Jaluzi ve nitelikli kaplama cam opsiyonları bir arada aynı konfigürasyonda sunulmamaktadır.

\*\*\* Nitelikli Isırcamlar ( Sinerji, Konfor) yetkili şısecam üreticileri tarafından temin edilecektir ve Foldterm 111, Foldterm 311 ürünlerinde opsiyonel olarak sunulacaktır.

Note: carrier options from above and below will be determined by the expert's decision.

\* Colored glass is offered as an option from the available colors according to the customer's request.

\*\* Venetian blind models and colors are only available as an option for Foldterm 111 product. Venetian blind and Low-e coated glass options cannot be offered together in the same configuration.

\*\*\* Low-E coated double glasses (Synergy, Comfort) will be supplied by authorized şısecam manufacturers and will be offered as an option on Foldterm 111, Foldterm 311 products.

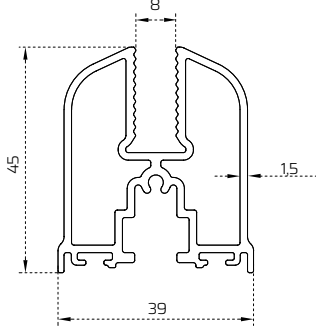




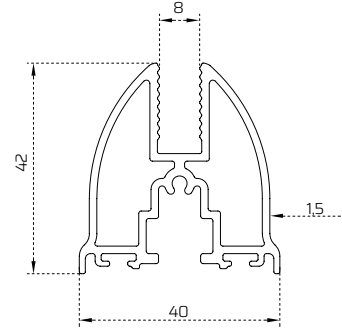
**FOLD**TECH101  
Tek Camlı Katlanır Sistem  
Single Glass Folding System



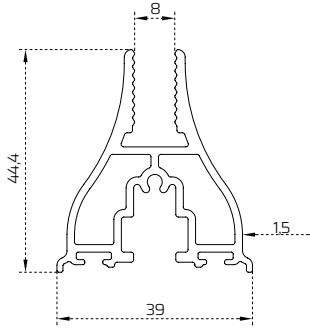
## Foldtech 101 - Tek Camlı Katlanır Sistem Profilleri Foldtech 101 - Single Glazed Folding System Profiles



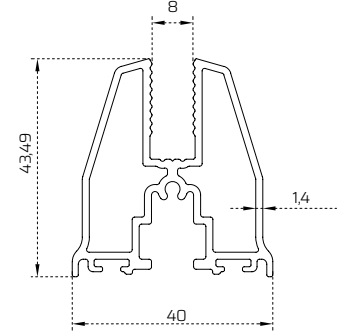
Foldtech 101 Baza Profili / Foldtech 101 Base Profile  
Kod/Code: 101101



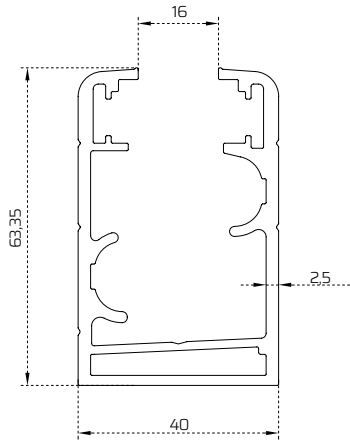
Foldtech 401 Baza Profili / Foldtech 401 Base Profile  
Kod/Code: 102101



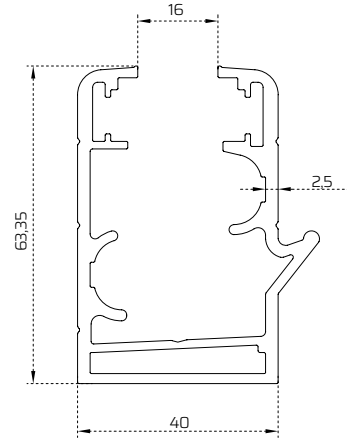
Foldtech 915 Baza Profili / Foldtech 915 Base Profile  
Kod/Code: 104101



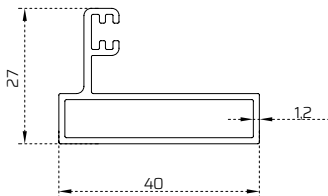
Foldtech 916 Baza Profili / Foldtech 916 Base Profile  
Kod/Code: 105101



Kasa Profili / Case Profile  
Kod/Code: 100101



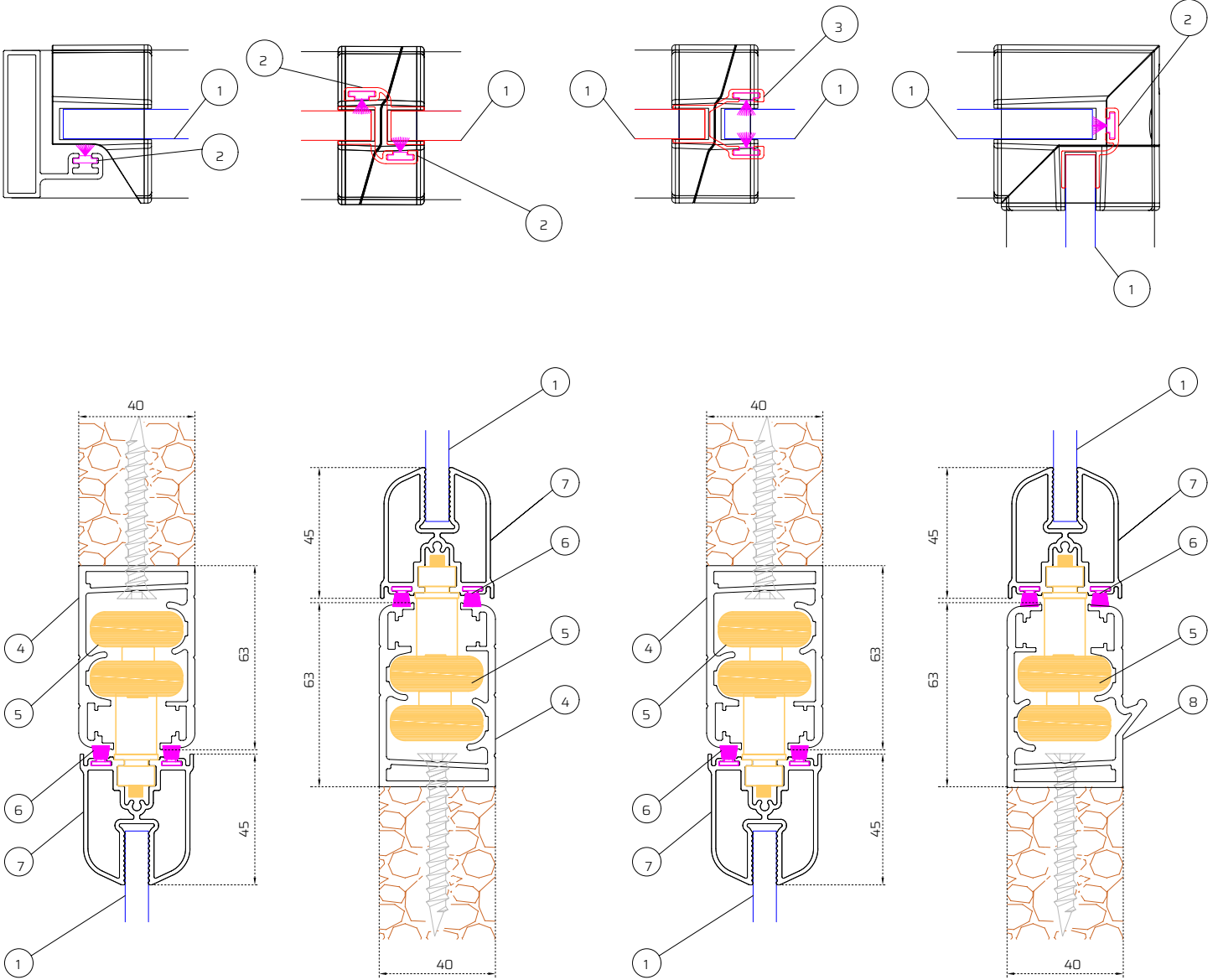
Damlalıklı Kasa Profili / Dropper Case Profile  
Kod/Code: 100101



Yan Dikme Profili / Side Case Profile  
Kod/Code: 100103

# FOLDTECH

## Foldtech 101 - Tek Camlı Katlanır Sistem Foldtech 101 - Single Glazed System



Dikey Kesit - Altın Taşıyıcı Sistem, Damlalıksız  
Vertical Section - Supported From Below, Non Dropper

Dikey Kesit - Altın Taşıyıcı Sistem, Damlalıklı  
Vertical Section - Supported From Below, Dropper

### BİLEŞEN TABLOSU / TABLE OF COMPONENTS

NO / NU	Bileşen / Component	Kod / Code
1	8mm Temperli Cam / 8mm Tempered Glass	
2	Tek Yön Alüminyum Fitol Profili / One Way Aluminium Wick	100301
3	Cam Cama Birleşim Alüminyum Fitol Profili / Middle Joint Aluminum Wick	100302
4	Kasa Profili / Case Profile	100101
5	Teker / Wheel	200113
6	Kıl Fitol 67*1000 / Brush Strip 67*1000	C00307
7	Foldtech 101 Baza Profili / Foldtech 101 Base Profile	101101
8	Damlalıklı Kasa Profili / Dropper Case Profile	100102

# FOLD SERİSİ / SERIES

KATLANIR CAM SİSTEMLERİ  
FOLDING GLASS SYSTEM

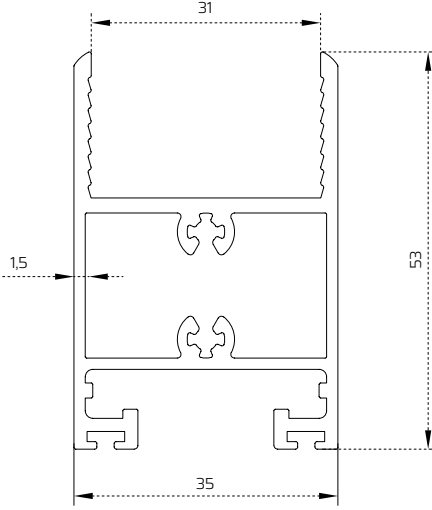


**FOLD**TERM 111  
**Iscamlı Katlanır Sistem**  
Double Glazed Folding  
Folding System

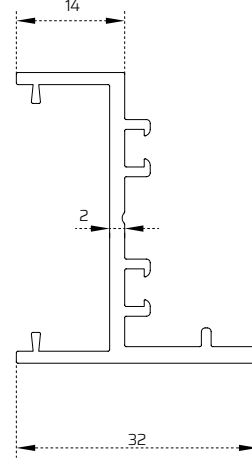


# FOLDTERM

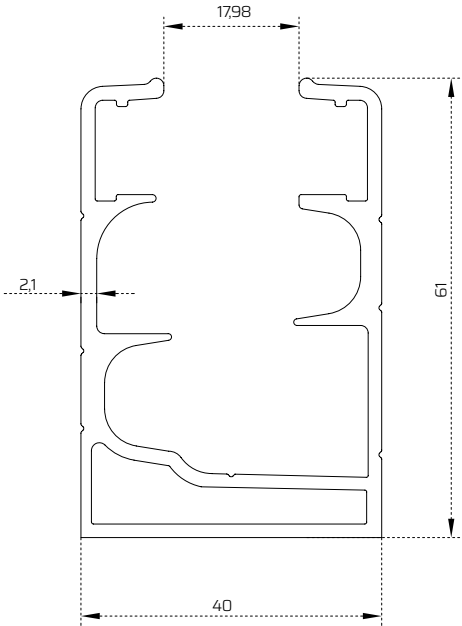
## Foldterm 111 - Isıcamlı Katlanır Sistem Profilleri Foldterm 111 - Double Glazed Folding System Profiles



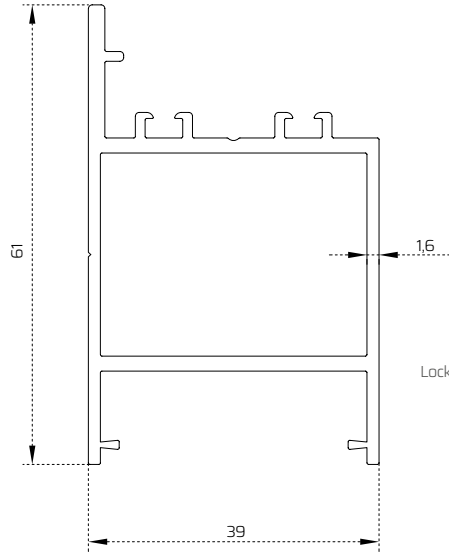
Isıcamlı Katlanır Kasa Profili  
Base Profile for Double Glazed  
Folding System  
Kod/Code: 108102



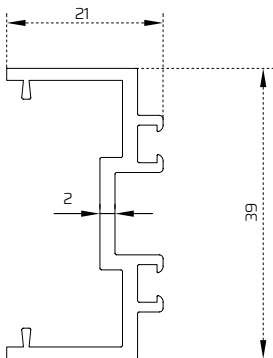
Isıcamlı Dikey Baza Profili  
Vertical Base Profile for Double  
Glazed Folding System  
Kod/Code: 108103



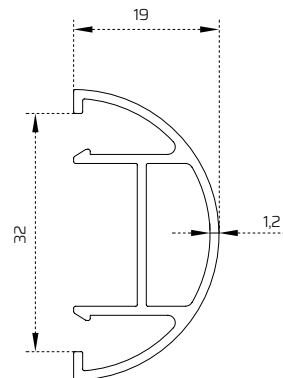
Isıcamlı Katlanır Kasa Profili  
Case Profile for Double Glazed  
Folding System  
Kod/Code: 108101



Isıcamlı Kilit Profili  
Lock Profile for Double Glazed  
Folding System  
Kod/Code: 108104



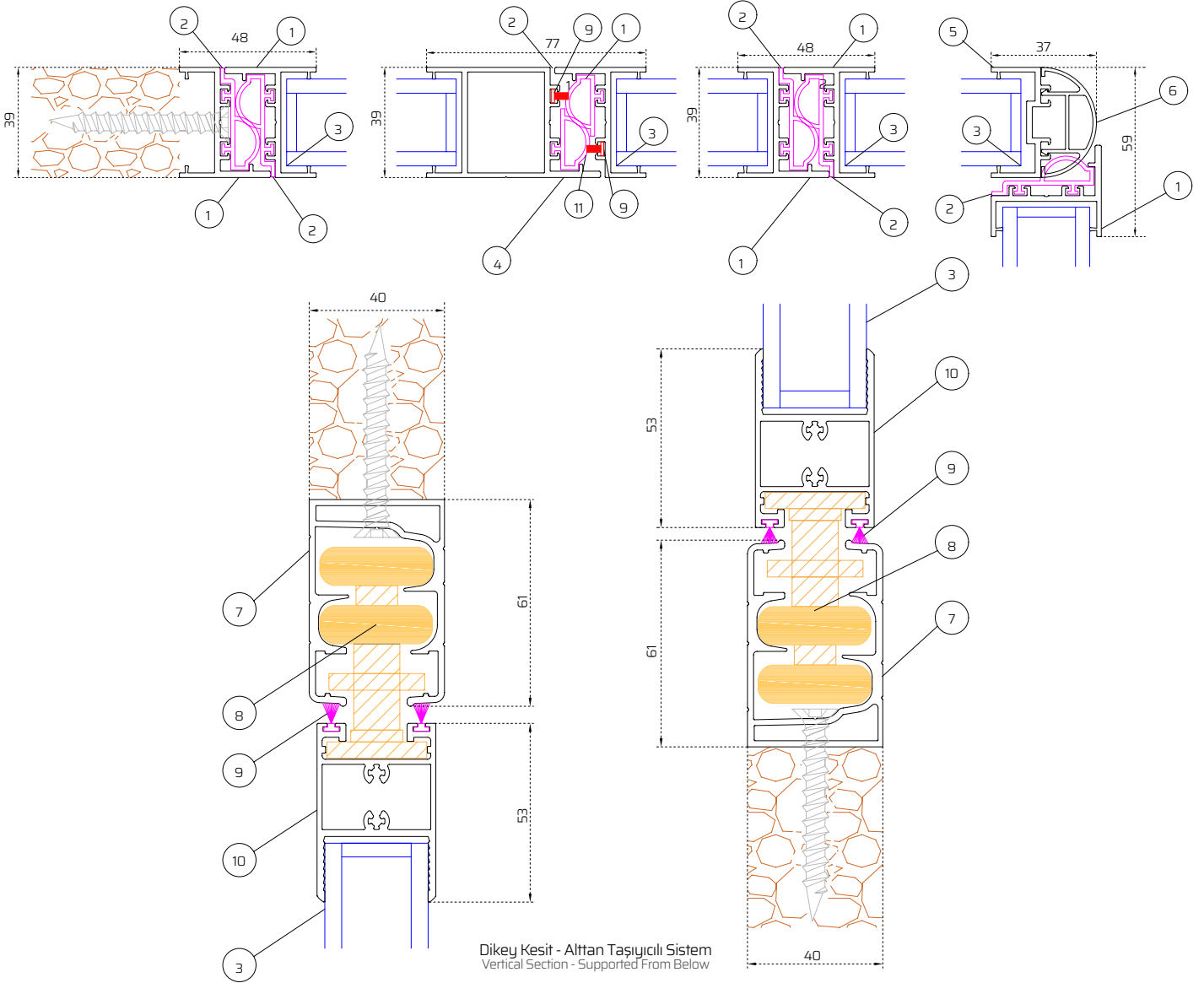
Isıcamlı Köşe Adaptör Profili  
Corner Adapter for Double Glazed  
Folding System  
Kod/Code: 108106



Isıcamlı Köşe Profili  
Corner Profile for Double Glazed  
Folding System  
Kod/Code: 108105

# FOLDTERM

## Foldterm 111 - Isıcamlı Katlanır Sistem Foldterm 111 - Double Glazed Folding System



Dikey Kesit - Altın Taşıyıcı Sistem  
Vertical Section - Supported From Below

### BİLEŞEN TABLOSU / TABLE OF COMPONENTS

NO / NU	Bileşen / Component	Kod / Code
1	Isıcamlı Dikey Baza Profili / Vertical Base Profile For Double Glazed Folding System	108103
2	Kenet Fitolu / Rubber Strip	108201
3	4mm + 22mm + 4 mm Temperli Isıcam / 4mm + 22mm + 4mm Tempered Double Glass	
4	Isıcamlı Kilit Profili / Lock Profile For Double Glazed Folding System	108104
5	Isıcamlı Köşe Adaptör Profili / Corner Adapter For Double Glazed Folding System	108106
6	Isıcamlı Köşe Profili / Corner Profile For Double Glazed Folding System	108105
7	Isıcamlı Katlanır Kasa Profili / Case Profile for Double Glazed Folding System	108101
8	Teker / Wheel	108201
9	Kıl Fitolu 48*1000 / Brush Strip 48*1000	C00303
10	Isıcamlı Katlanır Baza Profili / Base Profile for Double Glazed Folding System	108102
11	İlk Kenet Fitolu / Rubber Strip For First Lock Panel	

# FOLD SERİSİ / SERIES

KATLANIR CAM SİSTEMLERİ  
FOLDING GLASS SYSTEM

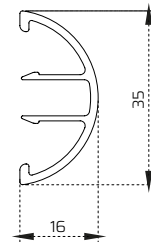
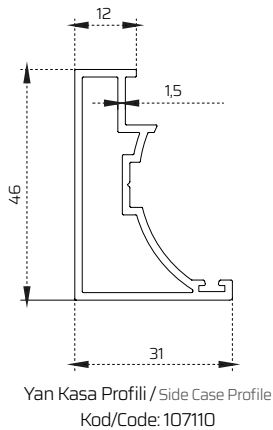
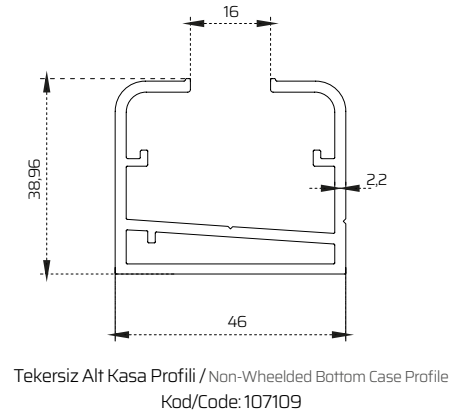
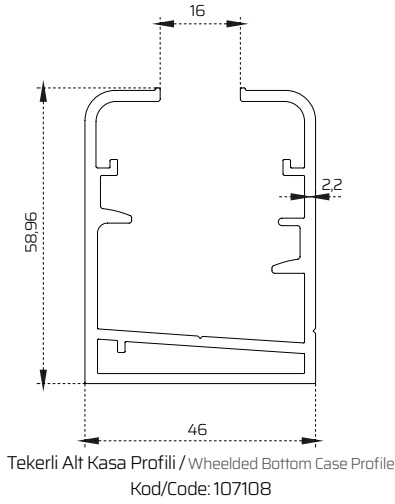
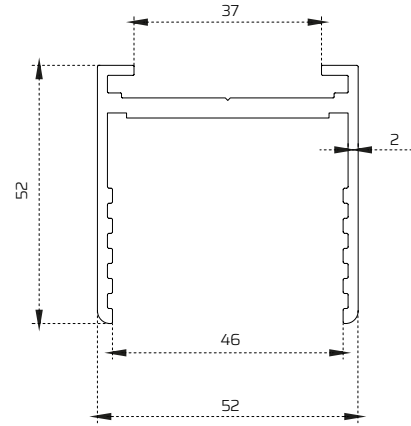
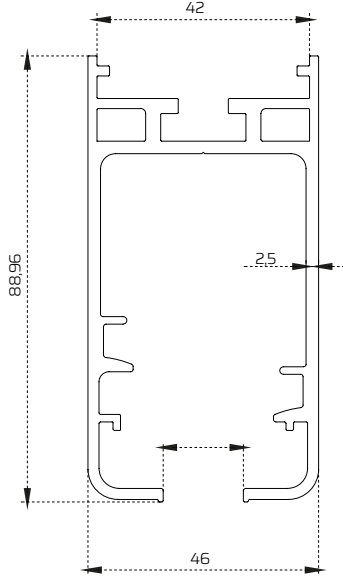




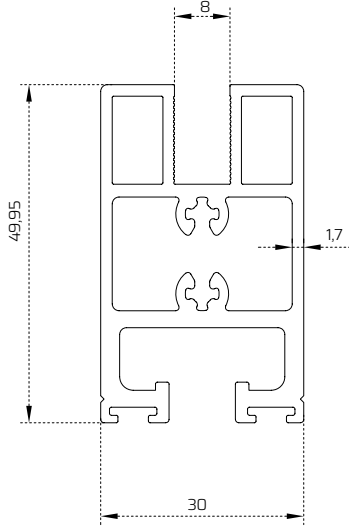
**FOLD**TECH301  
Tek Camlı Katlanır Sistem  
Single Glass Folding System



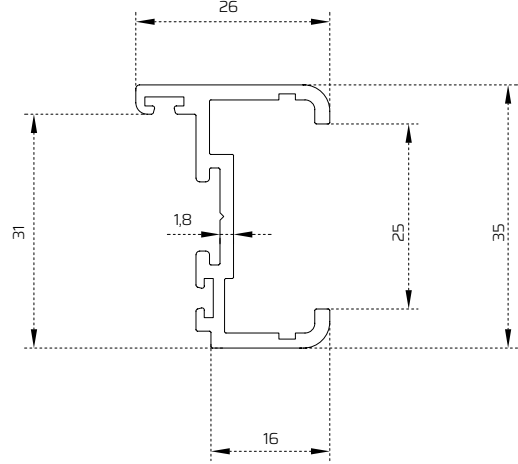
## Foldtech 301 - Tek Camlı Katlanır Sistem Profilleri Foldtech 301 - Single Glazed Folding System Profiles



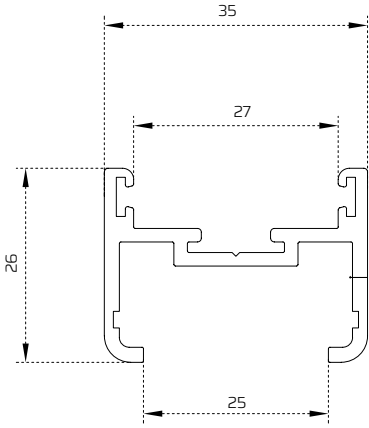
## Foldtech 301 - Tek Camlı Katlanır Sistem Profilleri Foldtech 301 - Single Glazed Folding System Profiles



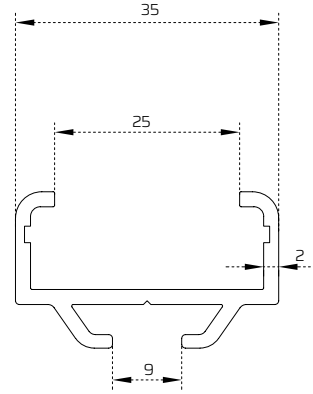
Tek Camlı Baza / Base Profile for Single Glazed System  
Kod/Code: 106101



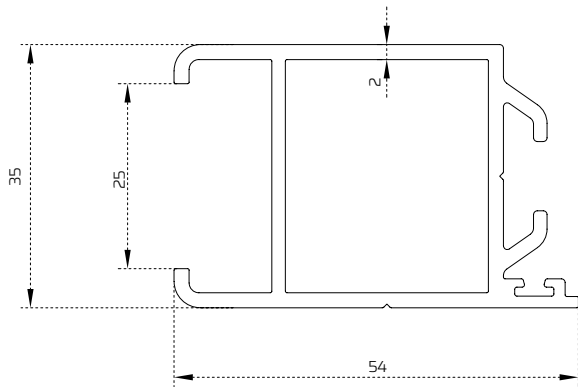
Köşe-Bitim Dikey Baza Profili / Vertical Base Profile for Corners and End Points  
Kod/Code: 107104



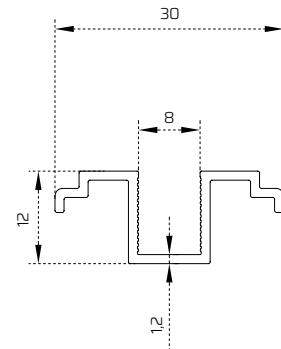
Dişi Dikey Baza Profili / Vertical Female Base Profile  
Kod/Code: 107103



Erkek Dikey Baza Profili / Vertical Male Base Profile  
Kod/Code: 107102



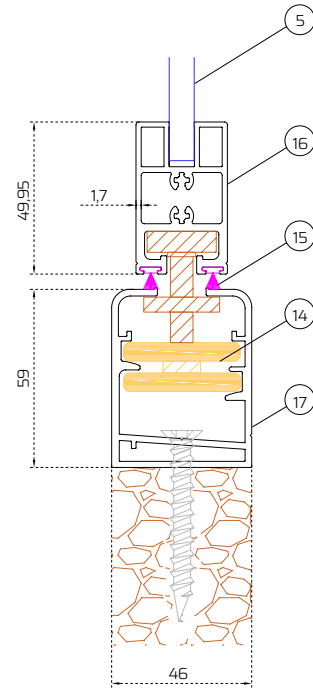
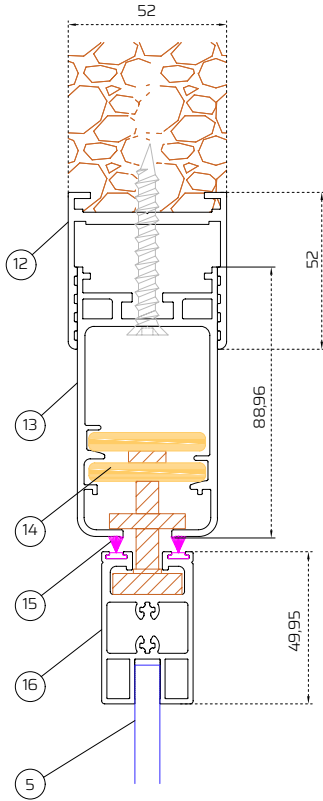
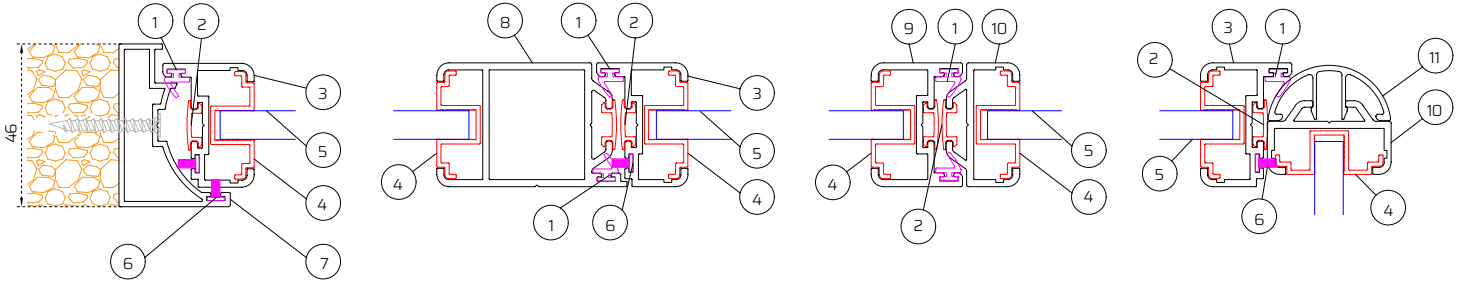
Kilit Dikey Baza Profili / Vertical Lock Base Profile  
Kod/Code: 107105



Tek Cam Adaptör / Single Glass Adapter  
Kod/Code: 106106

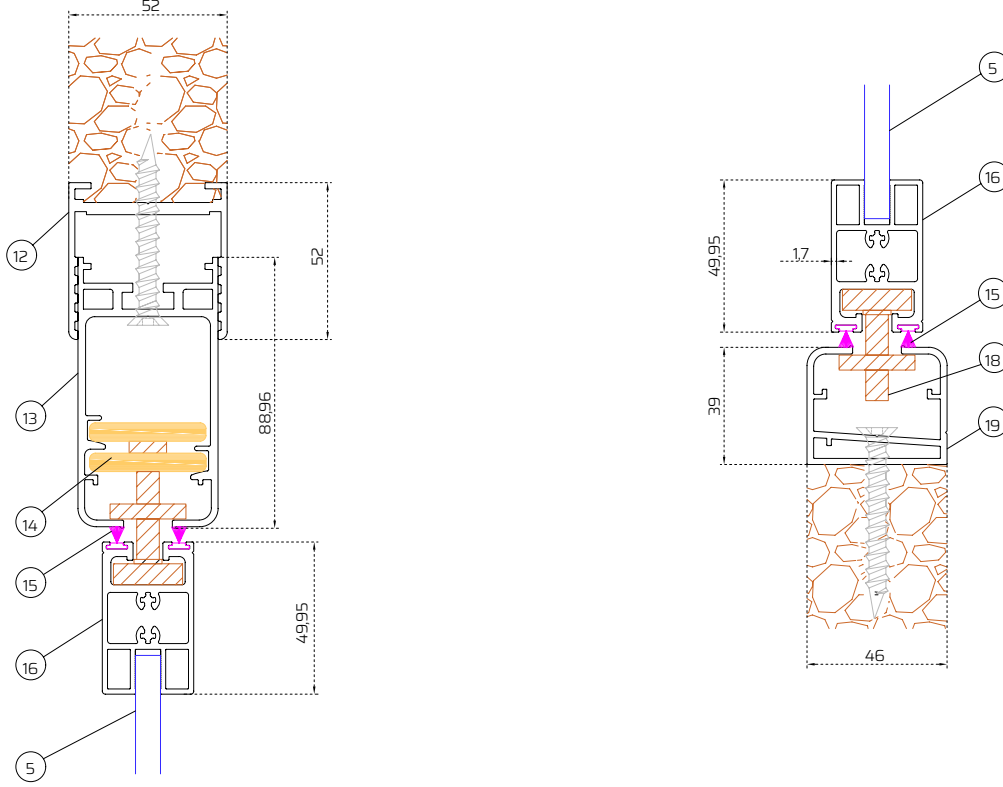
# FOLDTECH

## Foldtech 301 - Tek Camlı Katlanır Sistem Foldtech 301 - Single Glazed Folding System



Dikey Kesit - Alttan Taşıyıcılı Sistem  
Vertical Section - Supported From Below

## Foldtech 301 - Tek Camlı Katlanır Sistem Foldtech 301 - Single Glazed Folding System



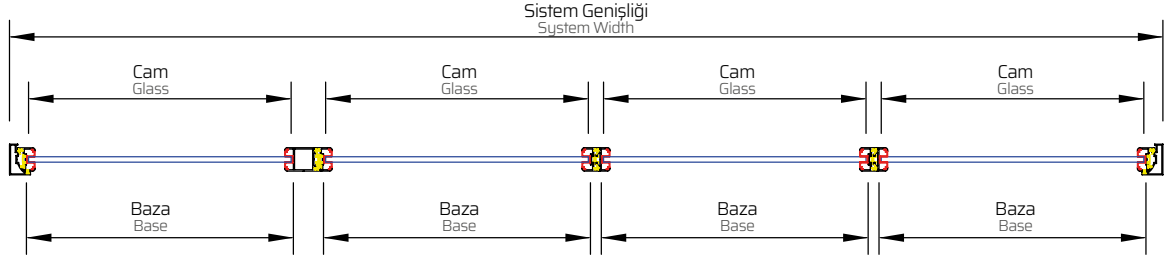
Dikey Kesit - Üstten Taşıyıcı Sistem  
Vertical Section - Supported From Above

### BİLEŞEN TABLOSU / TABLE OF COMPONENTS

NO / NU	Bileşen / Component	Kod / Code
1	Silikon Fıtıl / Silicon Strip	107301
2	Kauçuk Fıtıl / Rubber Strip	107302
3	Köşe-Bitim Dikey Baza Profili / Vertical Base Profile For Corners and End Points	107304
4	Tek Cam Adaptör / Single Glass Adapter	106106
5	8mm Temperli Cam / 8mm Tempered Glass	
6	Kıl Fıtıl 48*800 / Brush Strip 48*800	C00302
7	Yan Kasa Profili / Side Case Profile	107110
8	Kilit Dikey Baza Profili / Vertical Lock Base Profile	107105
9	Dişi Dikey Baza Profili / Vertical Female Base Profile	107103
10	Erkek Dikey Baza Profili / Vertical Male Base Profile	107102
11	Açılı Köşe Adaptör / Angled Corner Adapter	107111
12	Ayar Kasa Profili / Adjustment Case Profile	107107
13	Üst Kasa Profili / Top Case Profile	107106
14	Teker / Wheel	100236
15	Kıl Fıtıl 48*1000 / Brush Strip 48*1000	C00303
16	Tek Camlı Baza Profili / Baze Profile For Single Glazed System	106101
17	Tekerli Alt Kasa Profili / Bottom Case Profile For Supported From Below	107108
18	Park Kılavuz Pimi / Parking Guide Pin	100246
19	Tekersiz Alt Kasa Profili / Bottom Case Profile For Supported From Above	107109

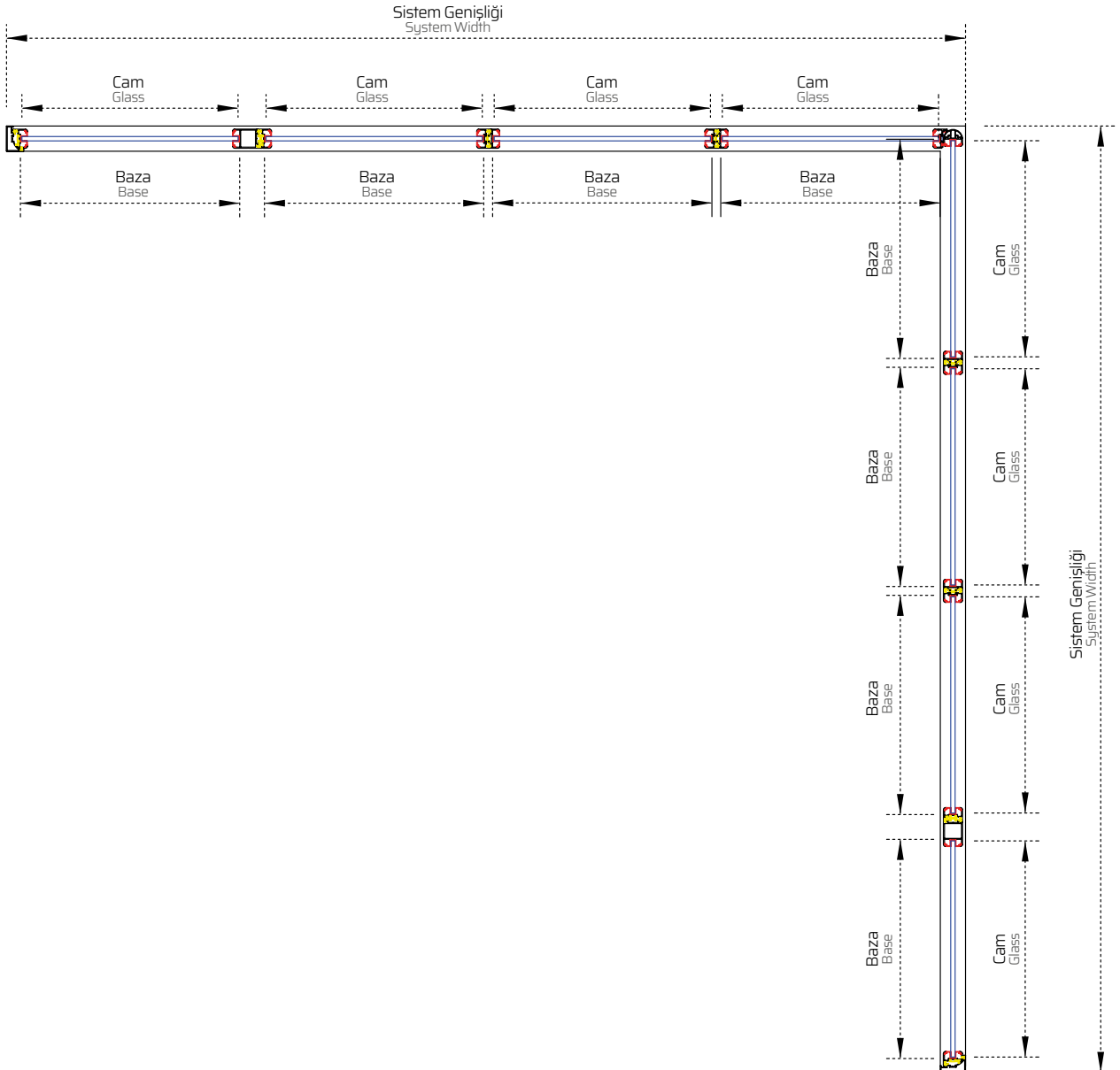
## Foldtech 301 - Tek Camlı Katlanır Sistem (Düz)

Foldtech 301 - Single Glazed Folding System (Flatways)



## Foldtech 301 - Tek Camlı Katlanır Sistem (Köşe Dönüştü)

Foldtech 301 - Single Glazed Folding System (Cornered)



## Sistemler Hesaplama Formülleri System Calculation Formulas



Min. Baza Genişliği = 450 mm  
Sınır Koşulları Min-Maks.  
Maks. Baza Genişliği = 850 mm  
Maks. Baza Yüksekliği = 2500 mm

Projeye Bağlı Değişkenler  
Baza Genişliği = [Sistem Genişliği - ((Kanat Sayısı - 2) \* 16.2 mm) - 45.2 mm - (2 \* 25.39 mm)] / Kanat Sayısı  
Cam Genişliği = Baza Genişliği - 3 mm

**Alttan Taşıyıcı Sistem**  
Kanat Yüksekliği = Sistem Yüksekliği - 63.46 mm - 11796 mm  
Cam Yüksekliği = Kanat Yüksekliği - (2\* 37.25 mm)

**Üstten Taşıyıcı Sistem**  
Kanat Yüksekliği = Sistem Yüksekliği - 43.46 mm - 11796 mm  
Cam Yüksekliği = Kanat Yüksekliği - (2\* 36.75 mm)

Min. Base Width = 450 mm  
Boundary Conditions  
Max. Base Width = 850 mm  
Max. Base Height = 2500 mm

Project Dependent Variables  
Base Width = [System Width - ((Number of Panel - 2) \* 16.2 mm) - 45.2 mm - (2 \* 25.39 mm)] / Number of Panel  
Glass Width = Base Width - 3 mm

**Supported From Below System**  
Panel Height = System Height - 63.46 mm - 11796 mm  
Glass Height = Panel Height - (2\* 36.75 mm)

**Supported From Above System**  
Panel Height = System Height - 43.46 mm - 11796 mm  
Glass Height = Panel Height - (2\* 36.75 mm)

# FOLD SERİSİ / SERIES

KATLANIR CAM SİSTEMLERİ  
FOLDING GLASS SYSTEMS





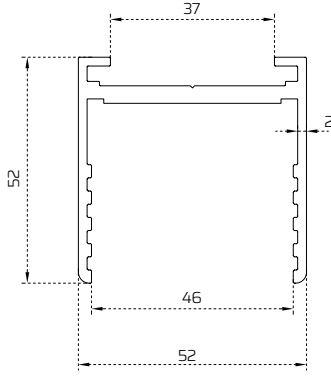
**FOLD**TERM 311  
**Isıcamlı Katlanır Sistem**  
Double Glazed Folding  
Folding System



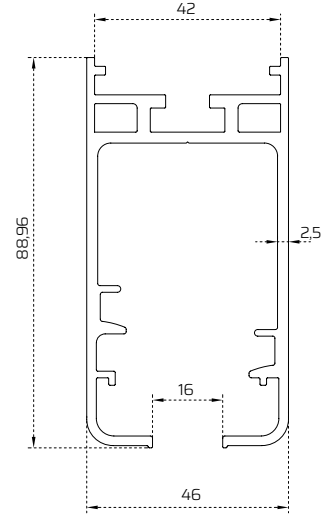
# FOLDTERM

## Foldterm 311 - Isıcamlı Katlanır Sistem Profilleri

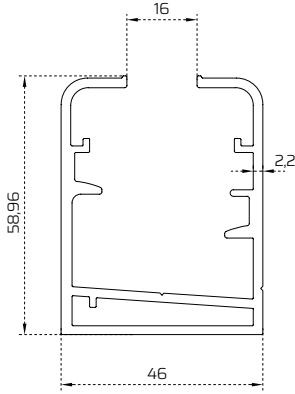
### Foldterm 311 - Double Glazed Folding System Profiles



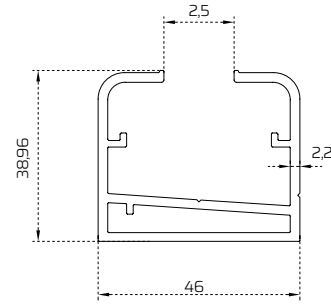
Ayar Kasa / Adjustment Case Profile  
Kod/Code: 107107



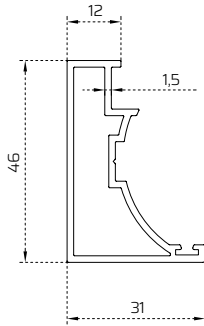
Üst Kasa Profili / Top Case Profile  
Kod/Code: 107106



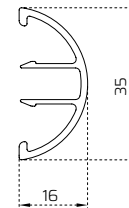
Tekerli Alt Kasa / Wheeled Bottom Case Profil  
Kod/Code: 107108



Tekersiz Alt Kasa / Non-Wheeled Bottom Case Profile  
Kod/Code: 107109



Yan Kasa Profili / Side Case Profile  
Kod/Code: 107110

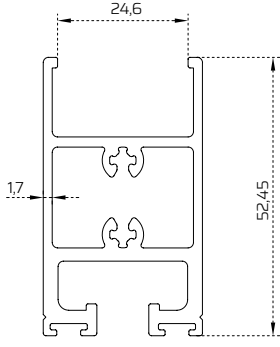


Açılı Köşe Adaptör / Angled Corner Adapter  
Kod/Code: 107111

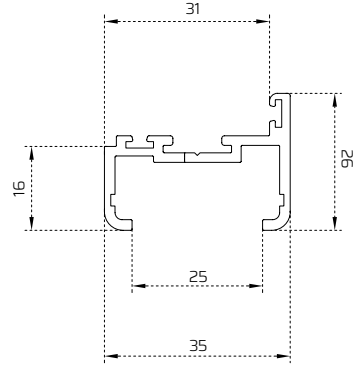
# FOLDTERM

## Foldterm 311 - Isıcamlı Katlanır Sistem Profilleri

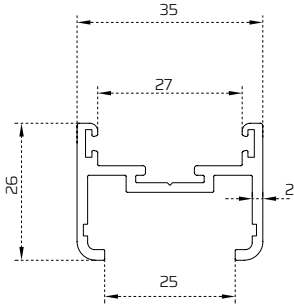
### Foldterm 311 - Double Glazed Folding System Profiles



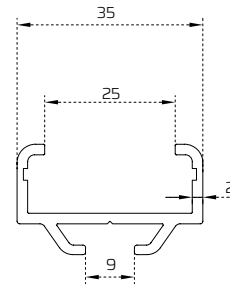
Isıcamlı Baza / Base Profile for Double Glazed System  
Kod/Code: 107101



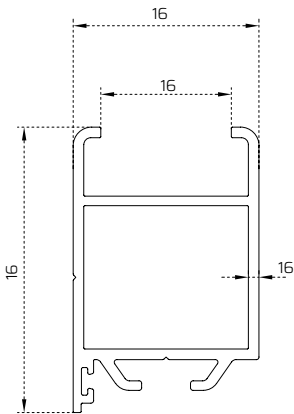
Köşe - Bitim Dikey Baza / Vertical Base Profile for Corners and End Points  
Kod/Code: 107104



Dişi Dikey Baza / Vertical Female Base Profile  
Kod/Code: 107103



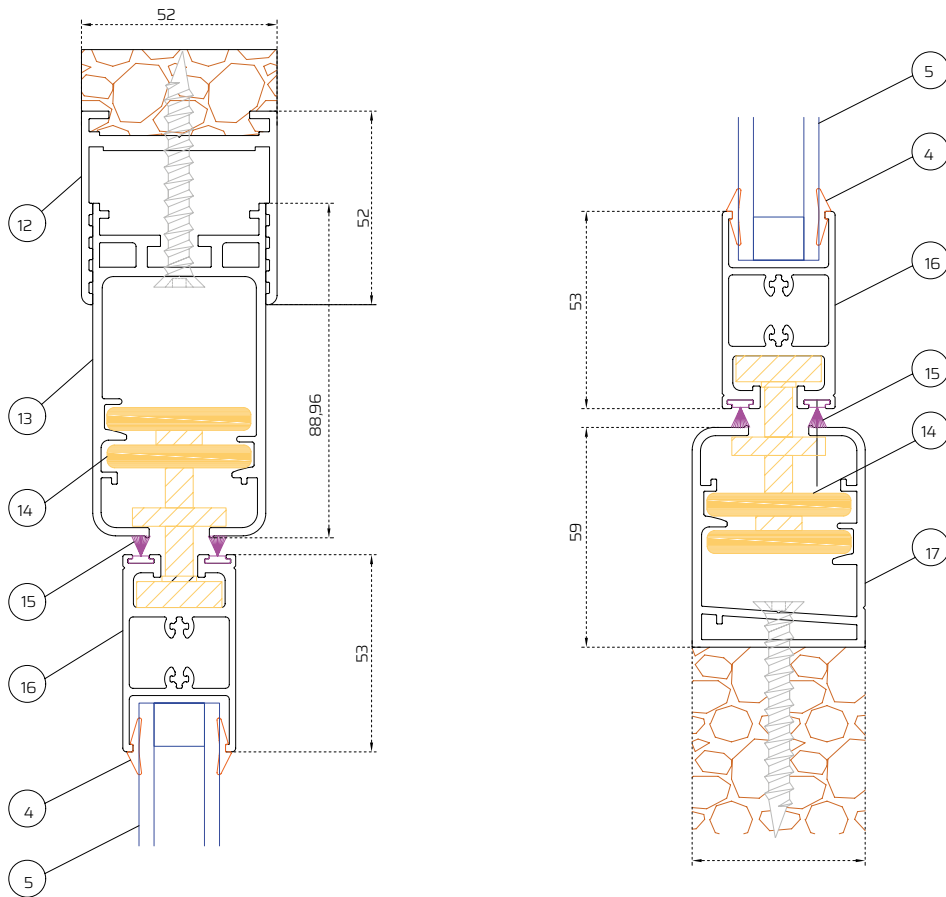
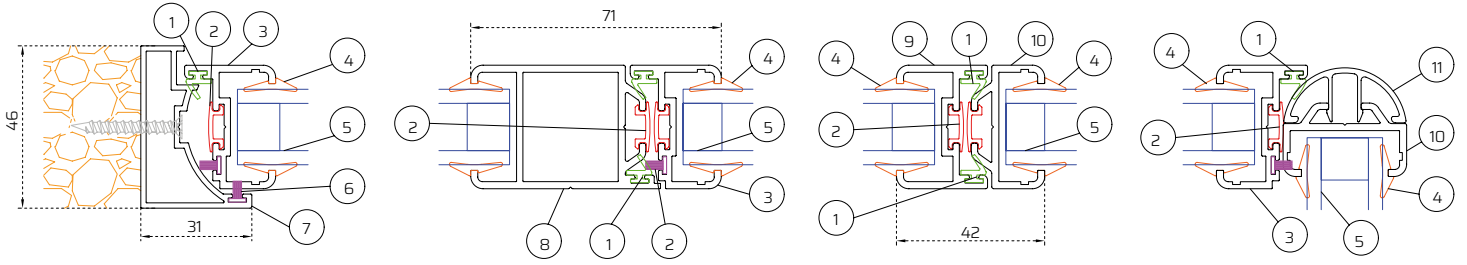
Erkek Dikey Baza / Vertical Male Base Profile  
Kod/Code: 107102



Açılı Köşe Adaptör / Angled Corner Adapter  
Kod/Code: 107111

# FOLDTERM

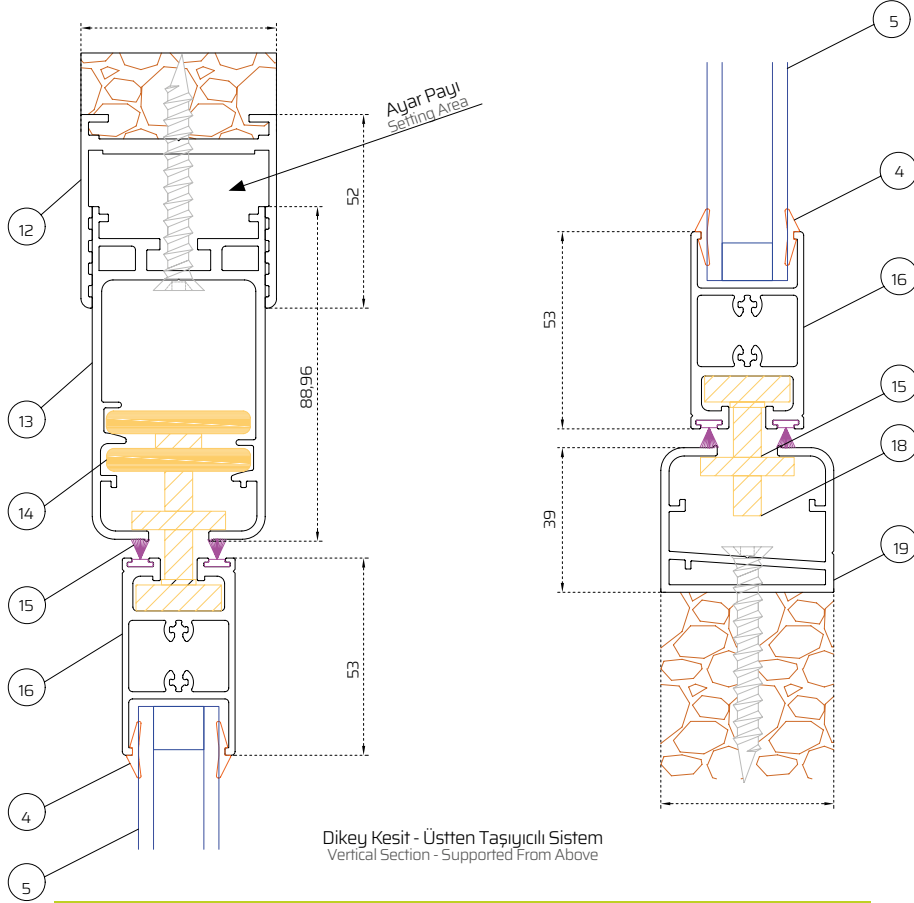
## Foldterm 311 - Isıcamlı Katlanır Sistem Foldterm 311 - Double Glazed Folding System



Dikey Kesit - Alttan Taşıyıcılı Sistem  
Vertical Section - Supported From Below

# FOLDTERM

## Foldterm 311 - Isıcamlı Katlanır Sistem Foldterm 311 - Double Glazed Folding System



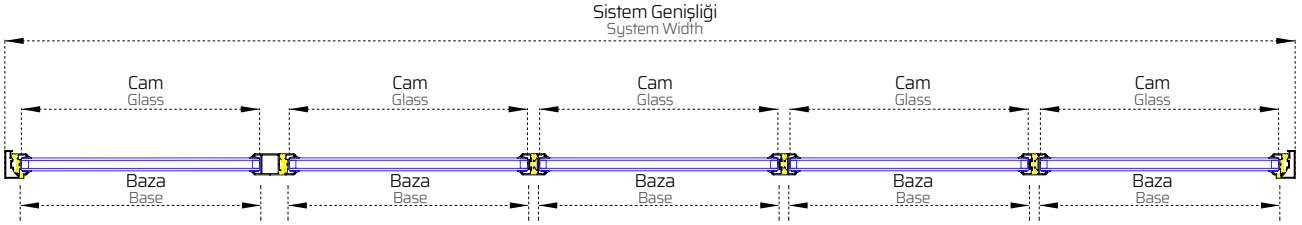
### BİLEŞEN TABLOSU / TABLE OF COMPONENTS

NO / NU	Bileşen / Component	Kod / Code
1	Silikon Fital / Silicon Strip	107301
2	Kauçuk Fital / Rubber Strip	107302
3	Köşe-Biçim Dikey Baza Profili / Vertical Base Profile For Corners and End Points	107304
4	Kama Fitali / Rubber Strip For Glass	107303
5	4mm+12mm+4mm Temperli Isıcam / 4mm+12mm+4mm Tempered Double Glass	
6	Kıl Fital 48*800 / Brush Strip 48*800	C00302
7	Yan Kasa Profili / Side Case Profile	107110
8	Kilit Dikey Baza Profili / Vertical Lock Base Profile	107105
9	Dişi Dikey Baza Profili / Vertical Female Base Profile	107103
10	Erkek Dikey Baza Profili / Vertical Male Base Profile	107102
11	Açılı Köşe Adaptör / Angled Corner Adapter	107111
12	Ayar Kasa Profili / Adjustment Case Profile	107107
13	Üst Kasa Profili / Top Case Profile	107106
14	Teker / Wheel	100236
15	Kıl Fital 48*1000 / Brush Strip 48*1000	C00303
16	Isıcamlı Baza Profili / Baze Profile For Double Glazed System	107101
17	Tekerli Alt Kasa Profili / Bottom Case Profile For Supported From Below	107108
18	Park Kılavuz Pimi / Parking Guide Pin	100246
19	Tekersiz Alt Kasa Profili / Bottom Case Profile For Supported From Above	107109

# FOLDTERM

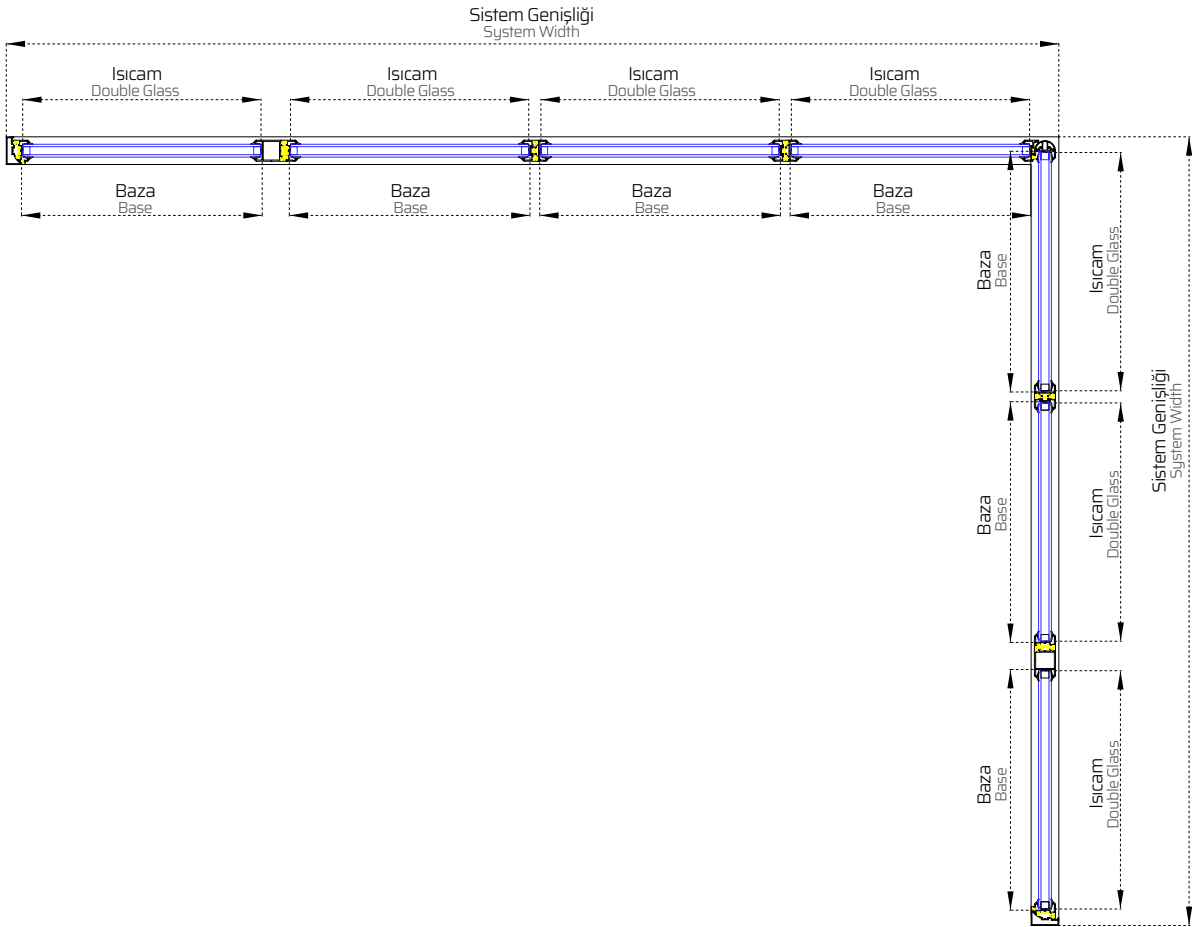
## Foldtech 311 - Isıcamlı Katlanır Sistem (Düz)

Foldtech 311 - Double Glazed Folding System (Flatways)



## Foldtech 311 - Isıcamlı Katlanır Sistem (Köşe Dönüştü)

Foldtech 311 - Double Glazed Folding System (Cornered)



# FOLDTERM

## Sistemler Hesaplama Formülleri System Calculation Formulas



Min. Baza Genişliği = 450 mm  
Sınır Koşulları Min-Maks.  
Maks. Baza Genişliği = 850 mm  
Maks. Baza Yüksekliği = 2500 mm

Projeye Bağlı Değişkenler  
Baza Genişliği = [Sistem Genişliği - ((Kanat Sayısı - 2) \* 16.2 mm) - 45.2 mm - (2 \* 25.39 mm)] / Kanat Sayısı  
Cam Genişliği = Baza Genişliği - 4 mm

**Alttan Taşıyıcı Sistem**  
Kanat Yüksekliği = Sistem Yüksekliği - 63.46 mm - 11796 mm  
Cam Yüksekliği = Kanat Yüksekliği - (2\* 37.25 mm)

**Üstten Taşıyıcı Sistem**  
Kanat Yüksekliği = Sistem Yüksekliği - 43.46 mm - 11796 mm  
Cam Yüksekliği = Kanat Yüksekliği - (2\* 37.25 mm)

Min. Base Width = 450 mm

Boundary Conditions  
Max. Base Width = 850 mm

Max. Base Height = 2500 mm

Project Dependent Variables  
Base Width = [System Width - ((Number of Panel - 2) \* 16.2 mm) - 45.2 mm - (2 \* 25.39 mm)] / Number of Panel  
Glass Width = Base Width - 4 mm

**Supported From Below System**  
Panel Height = System Height - 63.46 mm - 11796 mm  
Glass Height = Panel Height - (2\* 37.25 mm)

**Supported From Above System**  
Panel Height = System Height - 43.46 mm - 11796 mm  
Glass Height = Panel Height - (2\* 37.25 mm)

# FOLD SERİSİ / SERIES

KATLANIR CAM SİSTEMLERİ  
FOLDING GLASS SYSTEMS



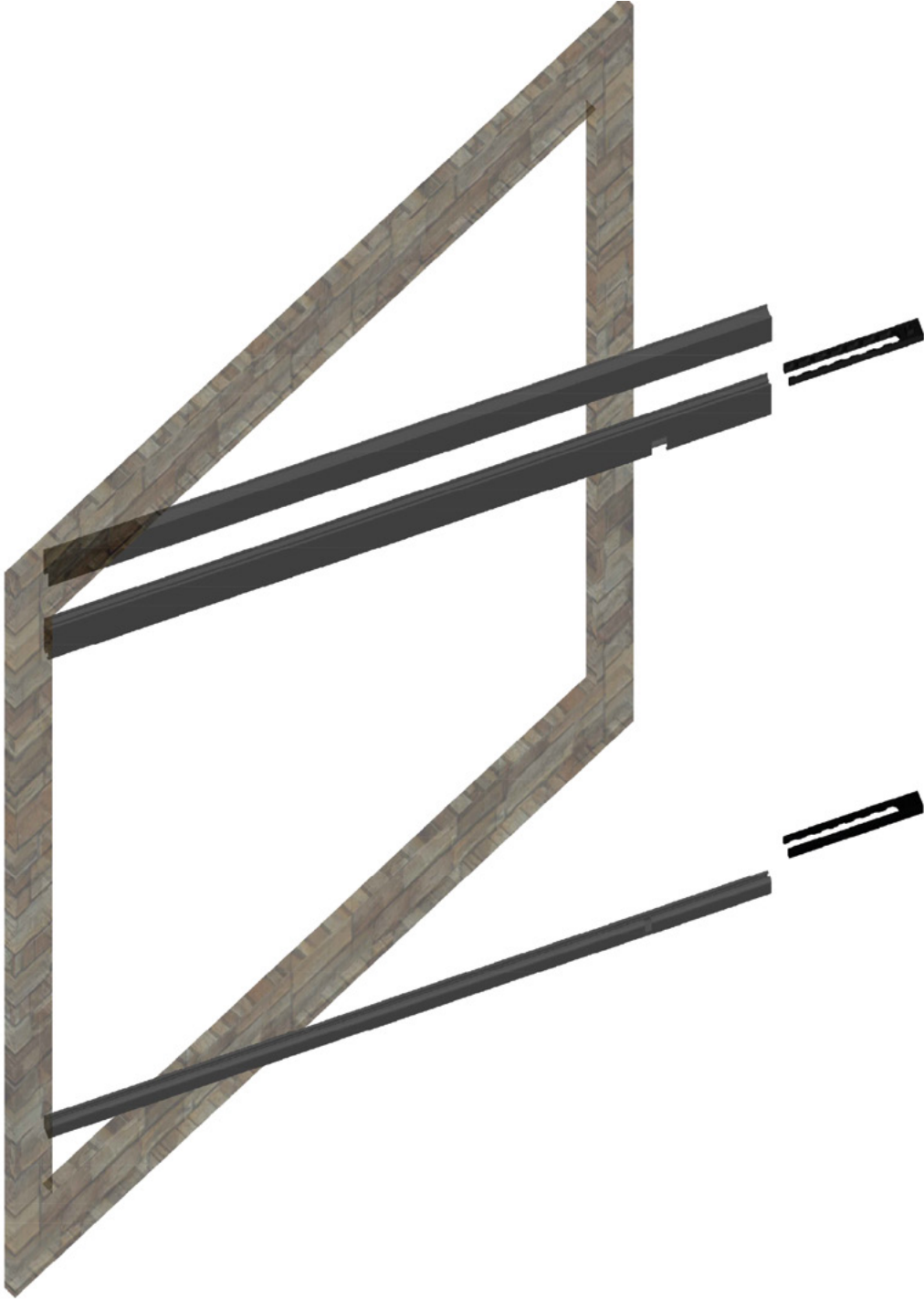


**KATLANIR SİSTEMLER  
MONTAJ ŞEMASI**

**INSTALLATION STEPS OF  
FOLDING GLASS SYSTEMS**



# FOLD SERİSİ / SERIES

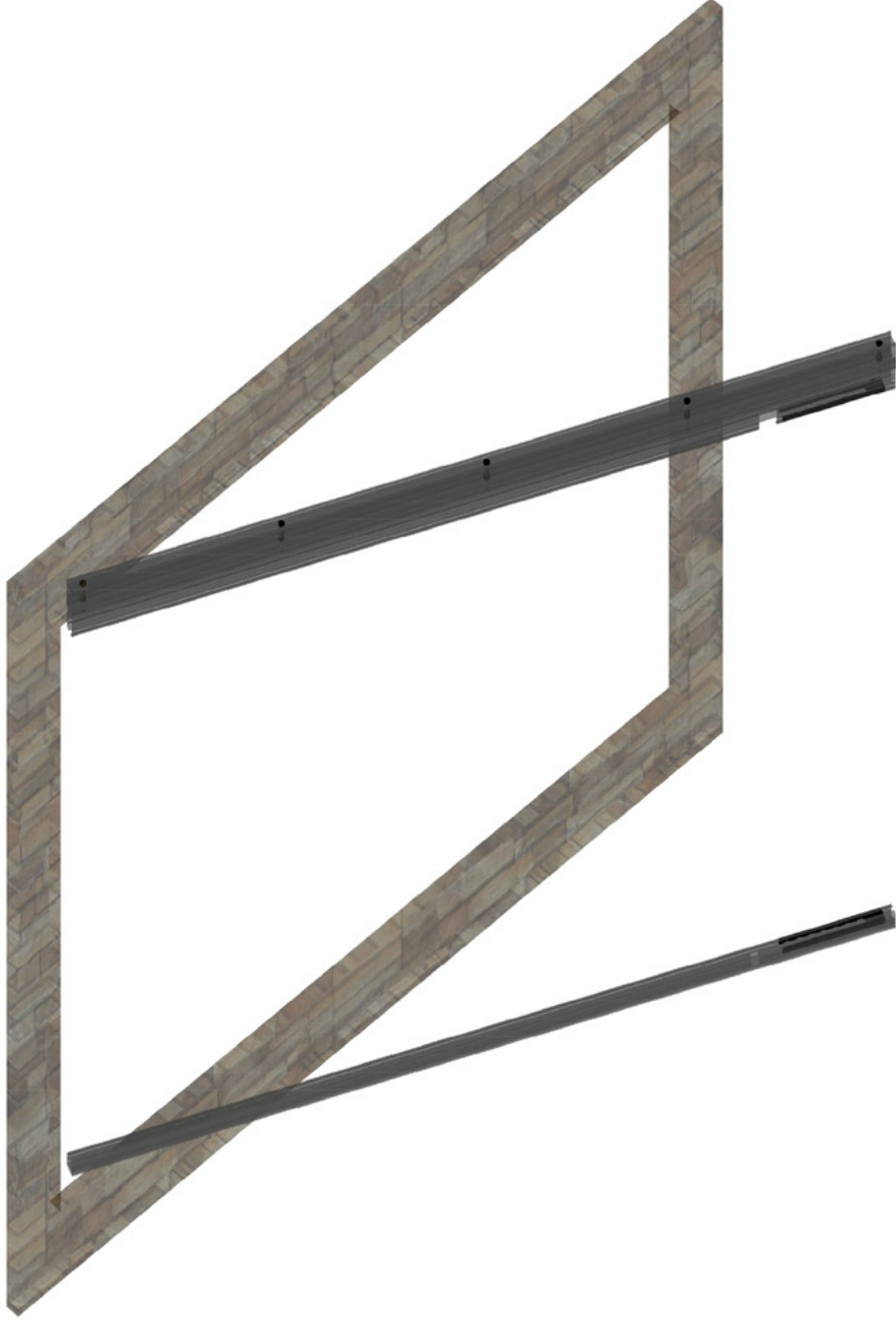


## ADIM - 1 / STEP - 1

Sisteme ait alt ve üst kasa profillerine kanat park aksesuarları geçirilir. Bu işlemin ardından ayar kasa, alt kasa ve üst kasa montajın gerçekleştirileceği alanda hazır bulundurulur.

Panel parking accessories are attached to the upper and lower frame profiles of the system. After this process, the adjustment case, lower case and upper case are kept ready in the area where the assembly will be performed.

# FOLD SERİSİ / SERIES



## ADIM - 2 / STEP - 2

Sistem alt kasası montajın gerçekleştirileceği alanın tabanına uygun vidalarla sabitlenir. Daha sonra ayar kasa profili tavana uygun vidalarla sabitlenir. Bu işlemin ardından sistemin çalışmasına engel olabilecek olan tavan ve taban eğimleri ayar kasası içerisine yerleştirilecek olan üst kasanın terazisinin ayarlanması ile tolere edilebilecektir.

The bottom frame of the system is fixed with screws suitable for the bottom of the area where the installation will be performed. Then the adjustment frame profile is fixed with screws suitable for the ceiling. After this process, the ceiling and bottom slopes that can prevent the system from working can be tolerated by adjusting the upper case, which will be placed in the adjustment case.

# FOLD SERİSİ / SERIES



## ADIM - 3 / STEP - 3

Sistemin alt kasası monte edildikten sonra ayar kasa tavana sabitlenir. Ayar kasa içerisine yerleştirilecek olan üst kasa sistem terazide olacak şekilde konumlandırılır. Üst kasanın ayar kasa içerisinde konumlandırılması sistemin terazi ayarını yapabilmeyi yanı sıra ölçüden kaynaklı hataları da tolere edebilme imkanı sağlayacaktır.

After mounting the bottom case of the system, the adjustment case is fixed on the ceiling. The upper case to be placed in the adjustment case is positioned to be on the system balance. Positioning the upper case in the adjustment case will allow the system to balance the scale, as well as the ability to tolerate measurement errors.

# FOLD SERİSİ / SERIES

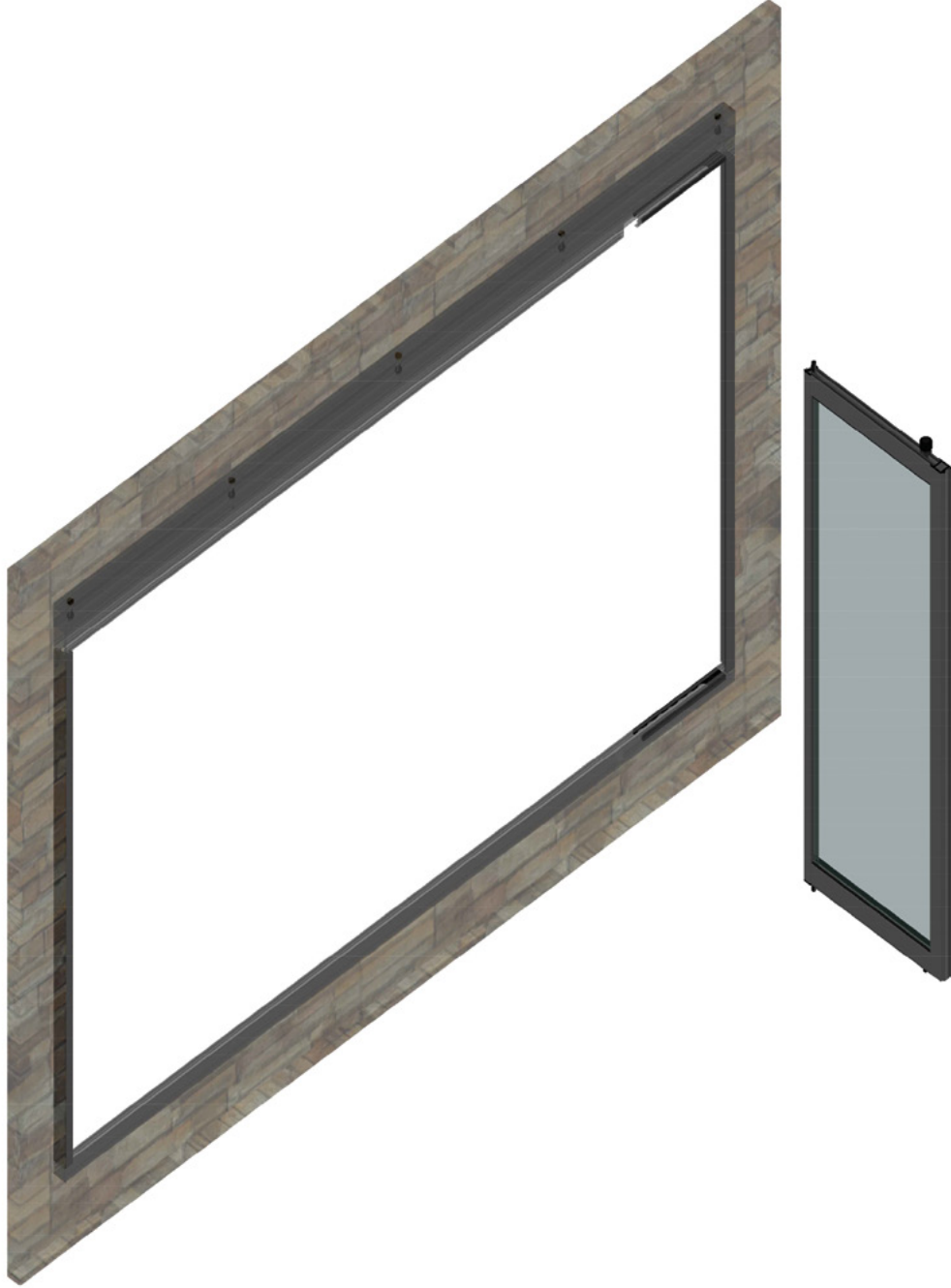


## ADIM - 4 / STEP - 4

Alt ve üst kasaların montajından sonra yan kasalar monte edilir.

After mounting the upper and lower frames, the side frames are mounted.

# FOLD SERİSİ / SERIES

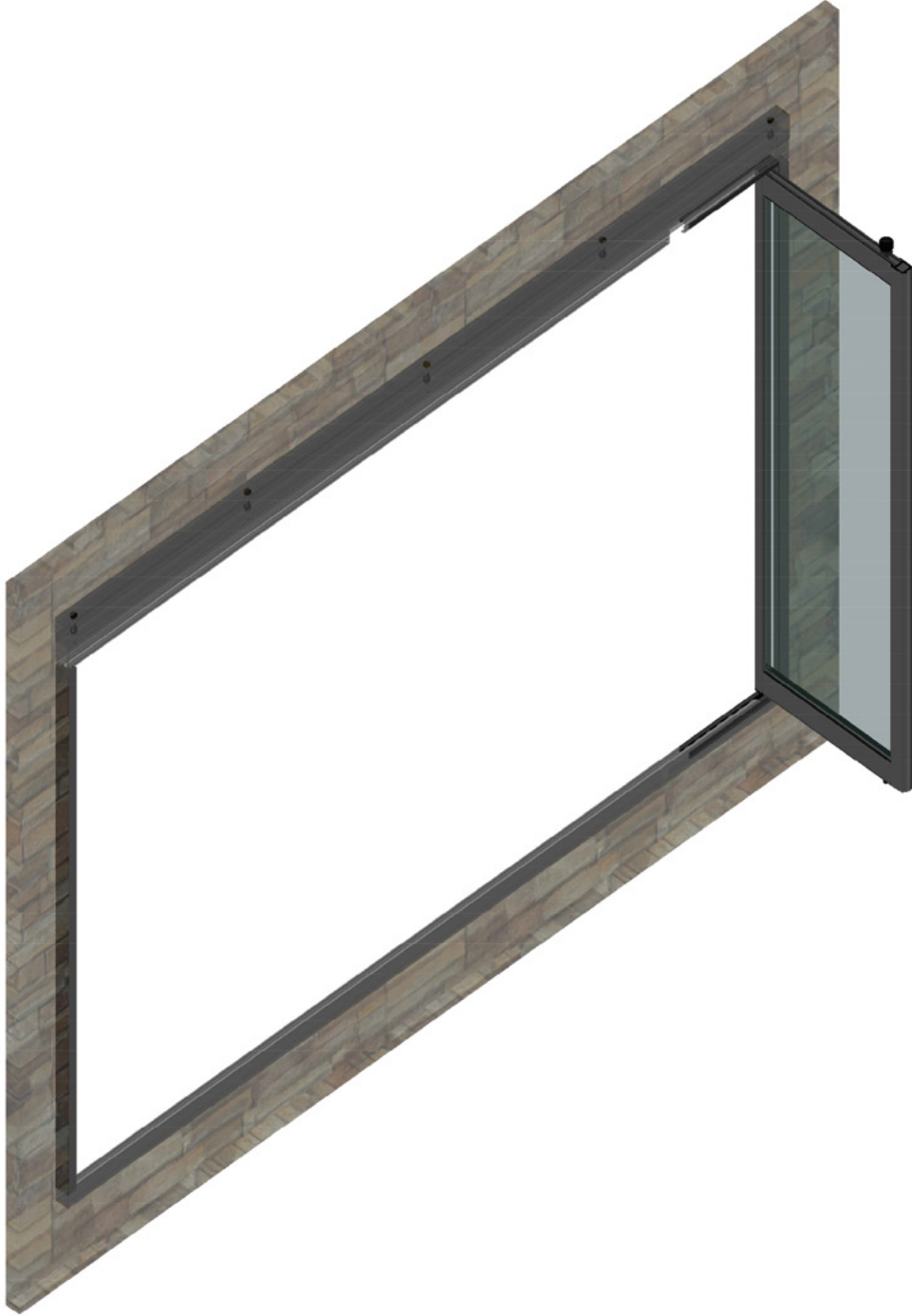


## ADIM - 5 / STEP - 5

Yan kasaların montajının ardından sisteme ait sabit kanat montajı gerçekleştirilir. Alt ve üst kasa profillerine yerleştirilen park aksesuarlarında sabit kanat pimlerinin oturacağı kısımlar mevcuttur.

After mounting the side frames, fixed panel assembly of the system is performed. There are parts where fixed panel pins will sit in the parking accessories placed on the lower and upper frame profiles.

# FOLD SERİSİ / SERIES

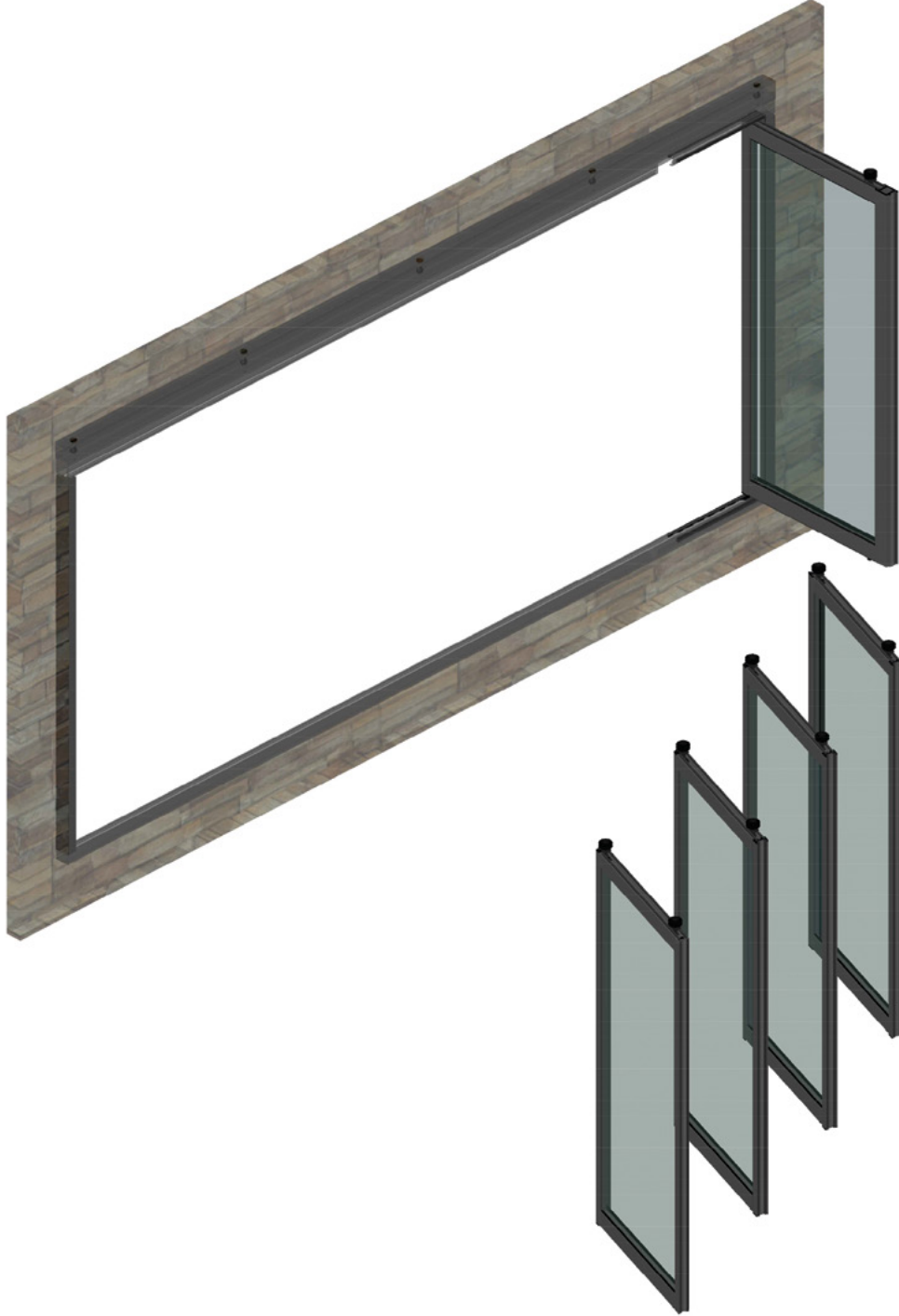


ADIM - 6 / STEP - 6

Sabit kanatın sisteme takılması

Installing the fixed panel to the system

# FOLD SERİSİ / SERIES



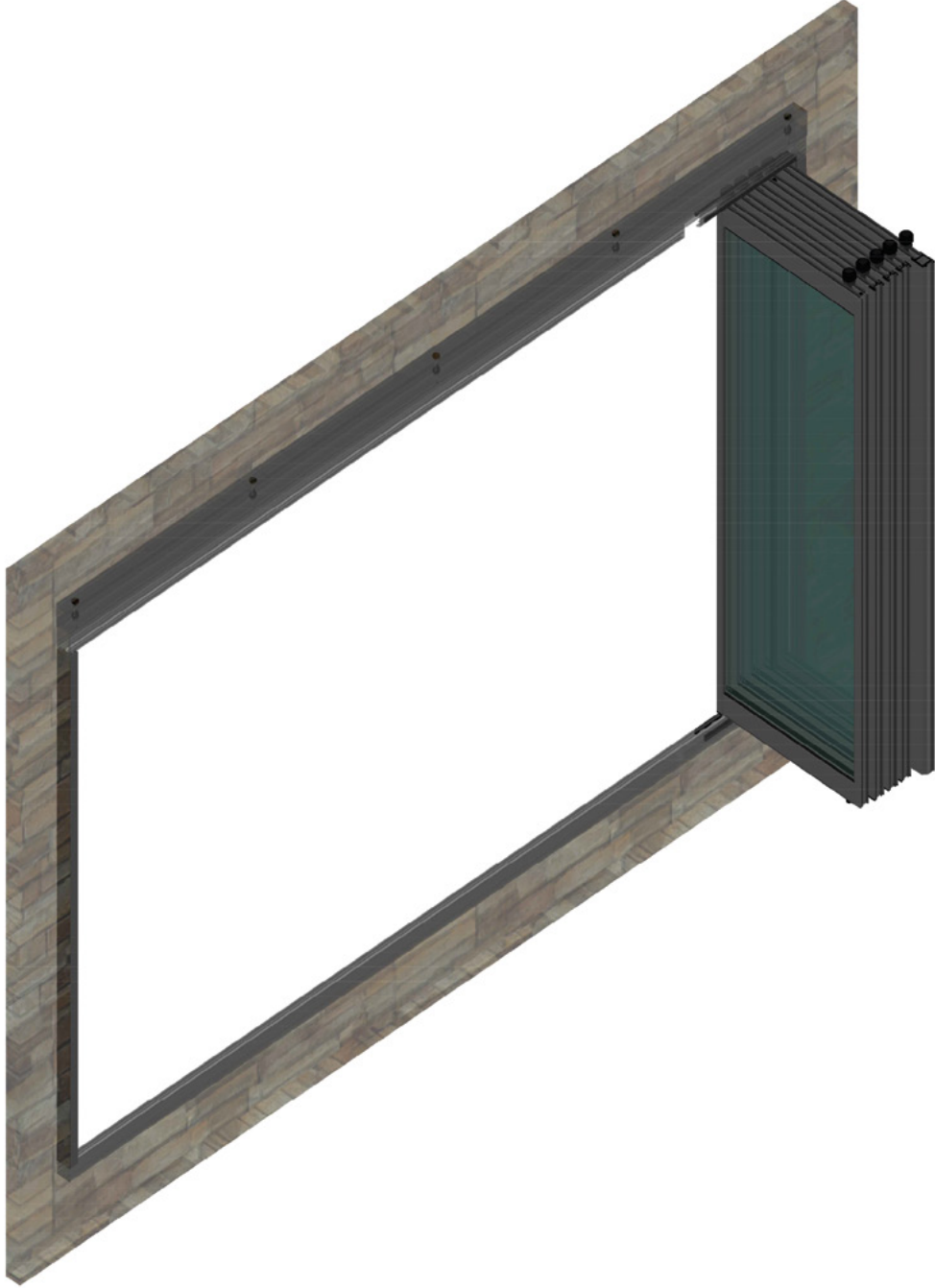
## ADIM - 7 / STEP - 7

Sabit kanadın montajından sonra diğerk kanatlar sırayla yerleřtirilir.

After the mounting of the fixed panel, the other wings are placed in order



# FOLD SERİSİ / SERIES

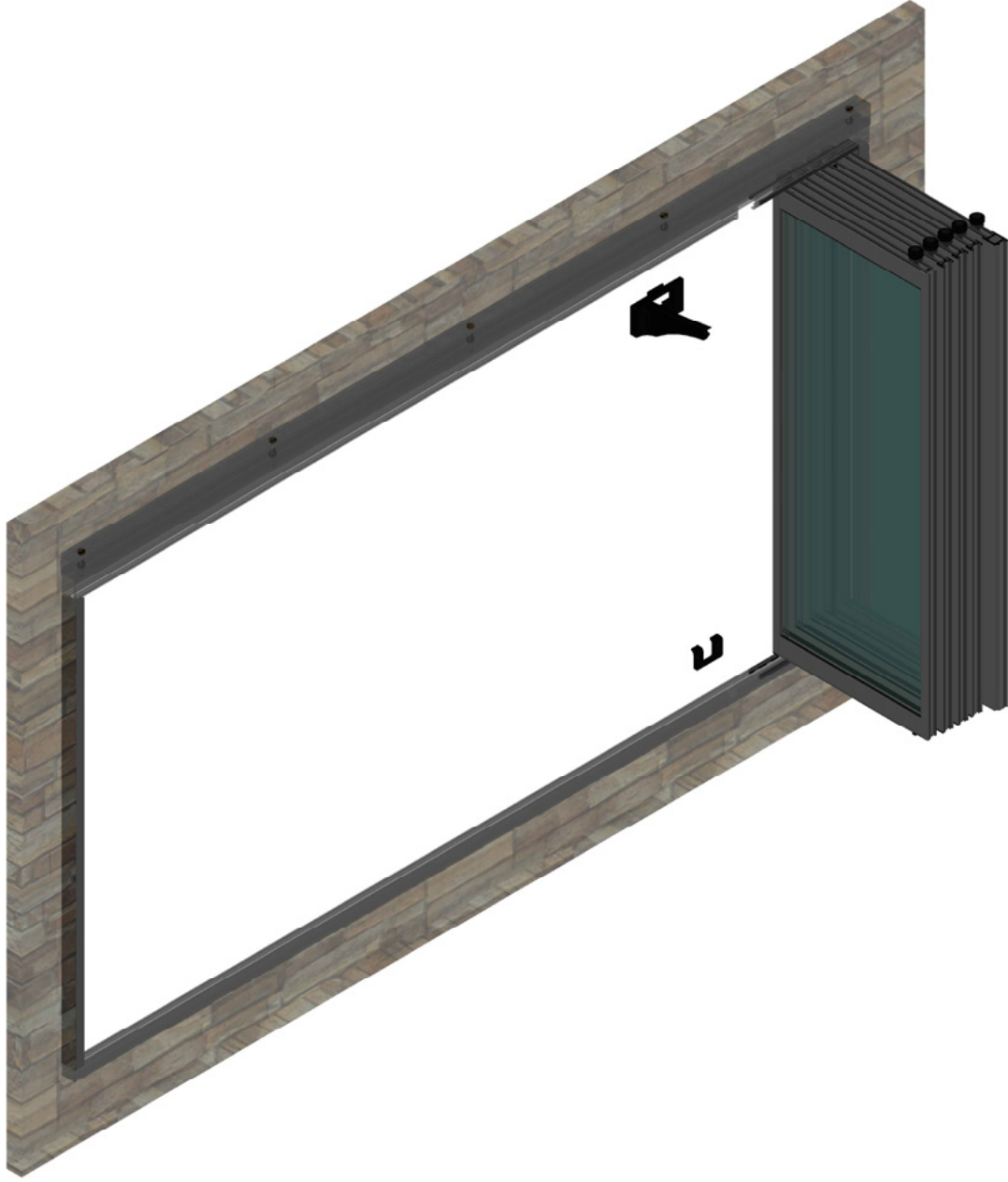


## ADIM - 7 / STEP - 7

Tüm kanatların sisteme entegre edilmesi

Integrating all panels into the system

# FOLD SERİSİ / SERIES

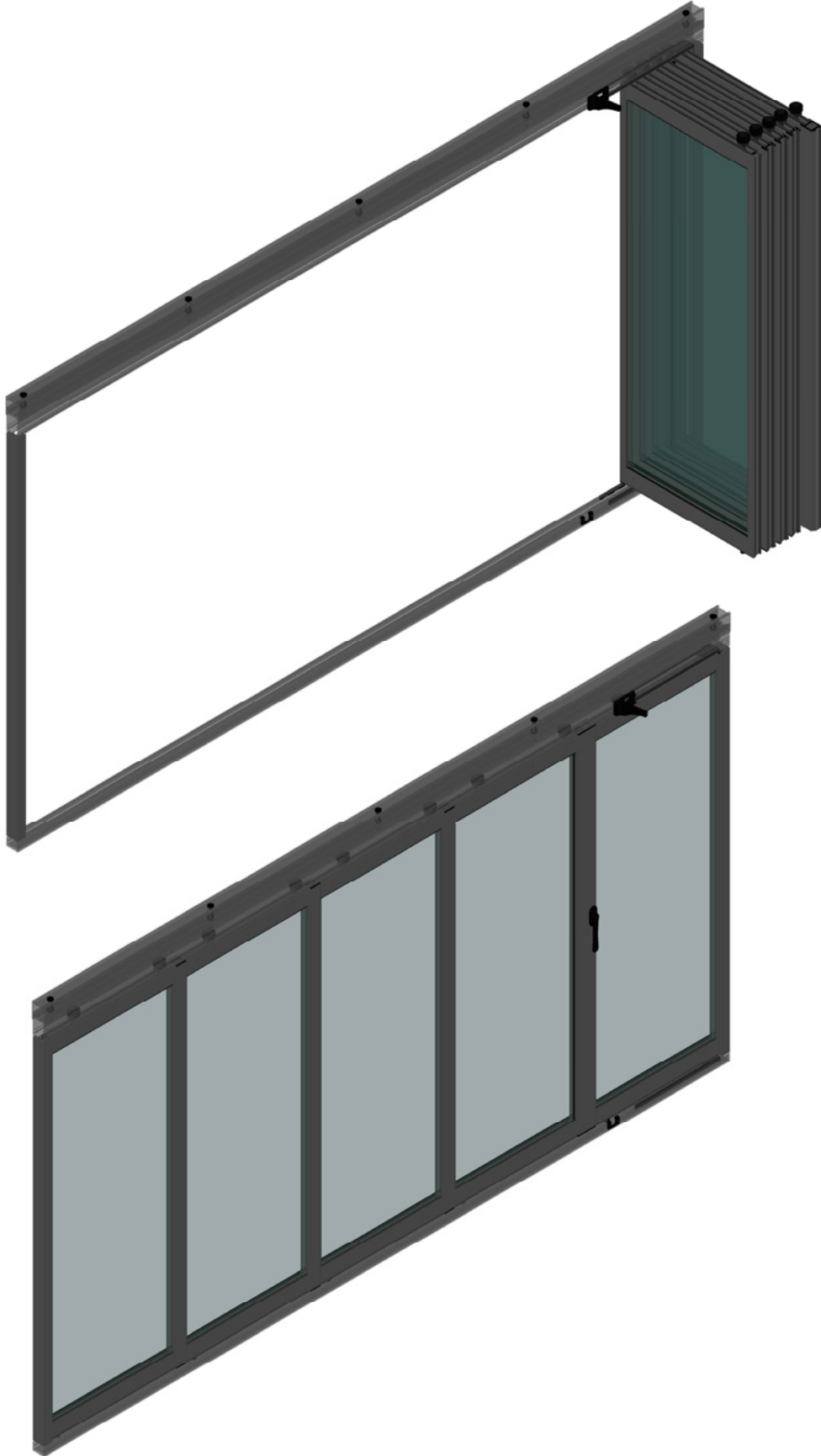


## ADIM - 8 / STEP - 8

Sistem kanatlarının montajından sonra alt ve üst kasalarda mevcut bulunan teker çıkış kертmelerine kapaklar takılır.

After assembly of the system panels, covers are installed on the wheel exits in the lower and upper cases.

# FOLD SERİSİ / SERIES





CONFORMITY

İZ

AN. TIC. LTD. ŞTİ.

and controls of product type that

95  
1.30 kN/m<sup>2</sup>  
1.00 kN/m<sup>2</sup>  
1.55 kN/m<sup>2</sup>  
1.5 kN/m<sup>2</sup>  
A3

CLASS C4  
CLASS C4

CONFORMING  
CLASS 4

CLASS C3 / B3  
CLASS C3 / B3

CONFORMING  
CLASS 4

DIRECTOR  
FIRAT MACUN

CERTIFICATE

CAM METAL MOBİLYA VE AKSESUARLARI  
SAN. TİC. LTD. ŞTİ.

ÖNDER MAH. KARPUZLU 1 CAD. NO: 5 ALTINDAĞ/ANKARA

**ISO 9001:2015**  
Kalite Yönetim Sistemi  
Quality Management System

"CAM BALKON KAPAMA SİSTEMLERİ, ALÜMİNYUM DOĞRAMA  
İMALATI FAALİYETLERİ"  
Kapsamında uygunluğunu onaylar.

05.03.2017  
04.11.2017  
30.10.2019  
03.11.2020  
3 yıl

IAF  
MEMBER OF MULTICERT  
REGISTRATION ARRANGEMENT

Onay / Approved  


CERTIFICATE

CAM METAL MOBİLYA VE AKSESUARLARI  
SAN. TİC. LTD. ŞTİ.

ÖNDER MAH. KARPUZLU 1 CAD. NO: 5 ALTINDAĞ/ANKARA

**OHSAS 18001:2007**  
İş Sağlığı ve Güvenliği Yönetim Sistemi  
Occupational Health and Safety Management System

"CAM BALKON KAPAMA SİSTEMLERİ, ALÜMİNYUM DOĞRAMA  
İMALATI FAALİYETLERİ"  
Kapsamında uygunluğunu onaylar.

05.03.2017  
04.11.2017  
30.10.2019  
03.11.2020  
3 yıl

IAF  
MEMBER OF MULTICERT  
REGISTRATION ARRANGEMENT

Onay / Approved  


CERTIFICATE

CAM METAL MOBİLYA VE AKSESUARLARI  
SAN. TİC. LTD. ŞTİ.

ÖNDER MAH. KARPUZLU 1 CAD. NO: 5 ALTINDAĞ/ANKARA

**ISO 14001:2015**  
Çevre Yönetim Sistemi  
Environmental Management System

"CAM BALKON KAPAMA SİSTEMLERİ, ALÜMİNYUM DOĞRAMA  
İMALATI FAALİYETLERİ"  
Kapsamında uygunluğunu onaylar.

05.03.2017  
04.11.2017  
30.10.2019  
03.11.2020  
3 yıl

IAF  
MEMBER OF MULTICERT  
REGISTRATION ARRANGEMENT

Onay / Approved  


# FOLDTERM



Hayata *mutlu* bir iz...  
Leave a *happier* mark on life...

**FOLD** TERM



**FOLD** SERİSİ  
/ SERIES

KATLANIR CAM SİSTEMLERİ  
FOLDING GLASS SYSTEMS



Karpuzlu 1 Cad. No:5 Siteler Altındağ/ANKARA

**T:** 0312 353 75 71 • **F:** 0312 348 44 99

[bilgi@elizcam.com.tr](mailto:bilgi@elizcam.com.tr)